

Anti-GPR151 antibody

Cat. No.	ml164015
Package	25 µl/100 µl/200 µl
Storage	-20°C, pH7.4 PBS, 0.05% NaN ₃ , 40% Glycerol

Product overview

Description	Anti-GPR151 rabbit polyclonal antibody
Applications	ELISA, IHC
Immunogen	Synthetic peptide of human GPR151
Reactivity	Human
Content	1.32 mg/ml
Host species	Rabbit
Ig class	Immunogen-specific rabbit IgG
Purification	Antigen affinity purification

Target information

Symbol	GPR151
Full name	G protein-coupled receptor 151
Synonyms	GPCR; PGR7; GALR4; GALRL; GPCR-2037
Swissprot	Q8TDV0

Target Background

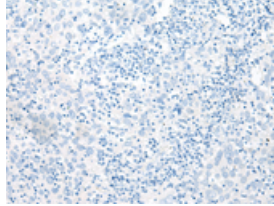
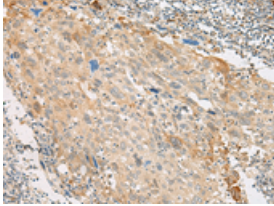
The protein encoded by this gene is similar to the galanin receptor subfamily of G protein-coupled receptors. The encoded protein is found predominantly in the central nervous system.

订购热线: 4008-898-798

Applications

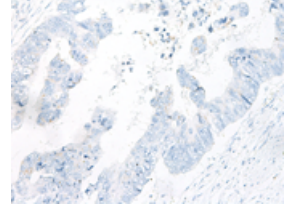
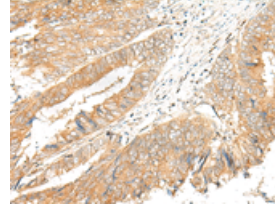
Immunohistochemistry

Predicted cell location: Cell membrane
Positive control: Human cervical cancer
Recommended dilution: 40-200



The image on the left is immunohistochemistry of paraffin-embedded Human cervical cancer tissue using ml164015(GPR151 Antibody) at dilution 1/45, on the right is treated with synthetic peptide. (Original magnification: ×200)

Predicted cell location: Cell membrane
Positive control: Human colorectal cancer
Recommended dilution: 40-200



The image on the left is immunohistochemistry of paraffin-embedded Human colorectal cancer tissue using ml164015(GPR151 Antibody) at dilution 1/45, on the right is treated with synthetic peptide. (Original magnification: ×200)

ELISA

Recommended dilution: 5000-10000

联系电话: 4008-898-798, 021-61725725

联系QQ: 2881505695, 2881505696

邮箱: mlbio_cn@yeah.net

网址: www.mlbio.cn