

Anti-GPR19 antibody

Cat. No. ml164032
Package 25 µl/100 µl/200 µl
Storage -20°C, pH7.4 PBS, 0.05% NaN₃, 40% Glycerol

Product overview

Description Anti-GPR19 rabbit polyclonal antibody
Applications ELISA, IHC
Immunogen Synthetic peptide of human GPR19
Reactivity Human, Mouse, Rat
Content 0.72 mg/ml
Host species Rabbit
Ig class Immunogen-specific rabbit IgG
Purification Antigen affinity purification

Target information

Symbol GPR19
Full name G protein-coupled receptor 19
Synonyms
Swissprot Q15760

Target Background

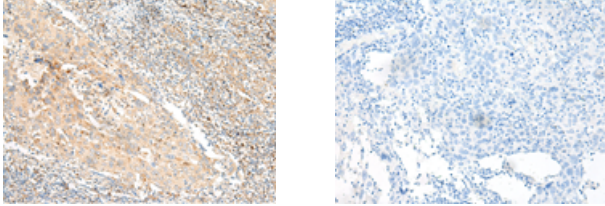
Orphan receptor.

订购热线: 4008-898-798

Applications

Immunohistochemistry

Predicted cell location: Cell membrane
Positive control: Human cervical cancer
Recommended dilution: 25-100



The image on the left is immunohistochemistry of paraffin-embedded Human cervical cancer tissue using ml164032(GPR19 Antibody) at dilution 1/25, on the right is treated with synthetic peptide. (Original magnification: $\times 200$)

ELISA

Recommended dilution: 5000-10000

联系电话: 4008-898-798, 021-61725725

联系QQ: 2881505695, 2881505696

邮箱: mlbio_cn@yeah.net

网址: www.mlbio.cn