

Anti-MCHR2 antibody

Cat. No.	ml164087
Package	25 µl/100 µl/200 µl
Storage	-20°C, pH7.4 PBS, 0.05% NaN ₃ , 40% Glycerol

Product overview

Description	Anti-MCHR2 rabbit polyclonal antibody
Applications	ELISA, IHC
Immunogen	Synthetic peptide of human MCHR2
Reactivity	Human
Content	0.42 mg/ml
Host species	Rabbit
Ig class	Immunogen-specific rabbit IgG
Purification	Antigen affinity purification

Target information

Symbol	MCHR2
Full name	melanin concentrating hormone receptor 2
Synonyms	SLT; MCH2; MCH2R; GPR145; GPRv17; MCH-2R; MCH-R2; MCHR-2
Swissprot	Q969V1

Target Background

Receptor for melanin-concentrating hormone, coupled to G proteins that activate phosphoinositide hydrolysis.

订购热线: 4008-898-798

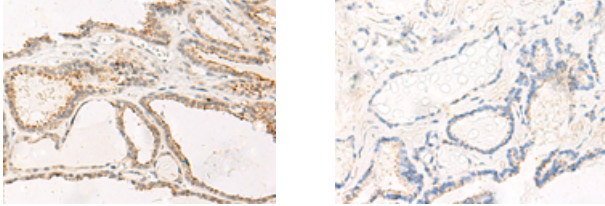
Applications

Immunohistochemistry

Predicted cell location: Cell membrane

Positive control: Human thyroid cancer

Recommended dilution: 20-100



The image on the left is immunohistochemistry of paraffin-embedded Human thyroid cancer tissue using ml164087(MCHR2 Antibody) at dilution 1/20, on the right is treated with synthetic peptide. (Original magnification: $\times 200$)

ELISA

Recommended dilution: 5000-10000

联系电话: 4008-898-798, 021-61725725

联系QQ: 2881505695, 2881505696

邮箱: mlbio_cn@yeah.net

网址: www.mlbio.cn