

Anti-GPR160 antibody

Cat. No. ml164094
Package 25 µl/100 µl/200 µl
Storage -20°C, pH7.4 PBS, 0.05% NaN₃, 40% Glycerol

Product overview

Description Anti-GPR160 rabbit polyclonal antibody
Applications ELISA, IHC
Immunogen Synthetic peptide of human GPR160
Reactivity Human
Content 0.24 mg/ml
Host species Rabbit
Ig class Immunogen-specific rabbit IgG
Purification Antigen affinity purification

Target information

Symbol GPR160
Full name G protein-coupled receptor 160
Synonyms GPCR1; GPCR150
Swissprot Q9UJ42

Target Background

Orphan receptor.

订购热线: 4008-898-798

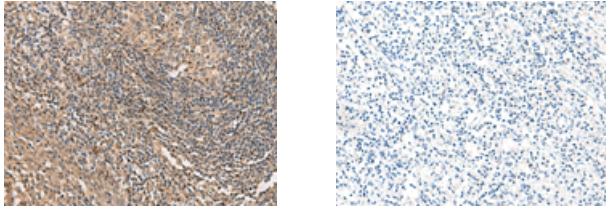
Applications

Immunohistochemistry

Predicted cell location: Cell membrane and Cytoplasm

Positive control: Human tonsil

Recommended dilution: 30-150



The image on the left is immunohistochemistry of paraffin-embedded Human tonsil tissue using ml164094(GPR160 Antibody) at dilution 1/20, on the right is treated with synthetic peptide. (Original magnification: $\times 200$)

ELISA

Recommended dilution: 5000-10000

联系电话: 4008-898-798, 021-61725725

联系QQ: 2881505695, 2881505696

邮箱: mlbio_cn@yeah.net

网址: www.mlbio.cn