

Anti-HASPIN antibody

| | |
|-----------------|---|
| Cat. No. | ml164148 |
| Package | 25 µl/100 µl/200 µl |
| Storage | -20°C, pH7.4 PBS, 0.05% NaN ₃ , 40% Glycerol |

Product overview

| | |
|---------------------|--|
| Description | Anti-HASPIN rabbit polyclonal antibody |
| Applications | ELISA, IHC |
| Immunogen | Synthetic peptide of human HASPIN |
| Reactivity | Human |
| Content | 1.26 mg/ml |
| Host species | Rabbit |
| Ig class | Immunogen-specific rabbit IgG |
| Purification | Antigen affinity purification |

Target information

| | |
|------------------|--------------------------------------|
| Symbol | HASPIN |
| Full name | histone H3 associated protein kinase |
| Synonyms | GSG2 |
| Swissprot | Q8TF76 |

Target Background

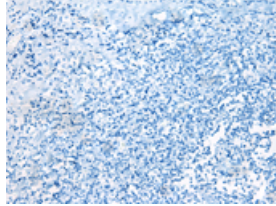
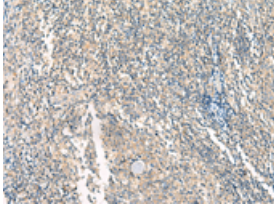
Serine/threonine-protein kinase that phosphorylates histone H3 at 'Thr-3' (H3T3ph) during mitosis. This positions and activates AURKB and other components of the chromosomal passenger complex (CPC) at centromeres to ensure proper chromatid cohesion, metaphase alignment and normal progression through the cell cycle.

订购热线: 4008-898-798

Applications

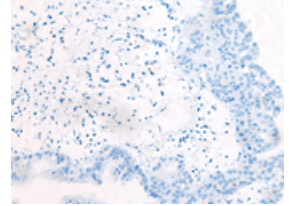
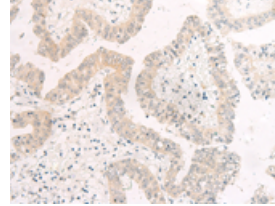
Immunohistochemistry

Predicted cell location: Cytoplasm
Positive control: Human tonsil
Recommended dilution: 40-200



The image on the left is immunohistochemistry of paraffin-embedded Human tonsil tissue using ml164148(HASPIN Antibody) at dilution 1/45, on the right is treated with synthetic peptide. (Original magnification: ×200)

Predicted cell location: Cytoplasm
Positive control: Human liver cancer
Recommended dilution: 40-200



The image on the left is immunohistochemistry of paraffin-embedded Human liver cancer tissue using ml164148(HASPIN Antibody) at dilution 1/45, on the right is treated with synthetic peptide. (Original magnification: ×200)

ELISA

Recommended dilution: 5000-10000

联系电话: 4008-898-798, 021-61725725

联系QQ: 2881505695, 2881505696

邮箱: mlbio_cn@yeah.net

网址: www.mlbio.cn