

## Anti-HLA-DQA2 antibody

<b>Cat. No.</b>	ml164191
<b>Package</b>	25 µl/100 µl/200 µl
<b>Storage</b>	-20°C, pH7.4 PBS, 0.05% NaN <sub>3</sub> , 40% Glycerol

### Product overview

<b>Description</b>	Anti-HLA-DQA2 rabbit polyclonal antibody
<b>Applications</b>	ELISA, IHC
<b>Immunogen</b>	Synthetic peptide of human HLA-DQA2
<b>Reactivity</b>	Human
<b>Content</b>	0.42 mg/ml
<b>Host species</b>	Rabbit
<b>Ig class</b>	Immunogen-specific rabbit IgG
<b>Purification</b>	Antigen affinity purification

### Target information

<b>Symbol</b>	HLA-DQA2
<b>Full name</b>	major histocompatibility complex, class II, DQ alpha 2
<b>Synonyms</b>	HLA-DXA; HLADQA2; DX-ALPHA
<b>Swissprot</b>	P01906

### Target Background

This gene belongs to the HLA class II alpha chain family. The encoded protein forms a heterodimer with a class II beta chain. It is located in intracellular vesicles and plays a central role in the peptide loading of MHC class II molecules by helping to release the CLIP molecule from the peptide binding site. Class II molecules are expressed in antigen presenting cells (B lymphocytes, dendritic cells, macrophages) and are used to present antigenic peptides on the cell surface to be recognized by CD4 T-cells.

订购热线: 4008-898-798

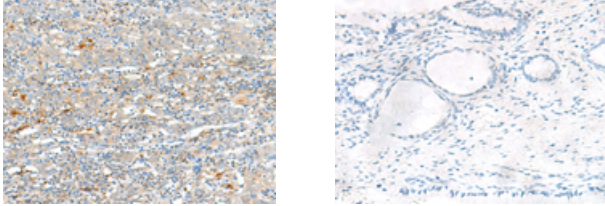
#### Applications

##### Immunohistochemistry

Predicted cell location: Cell membrane

Positive control: Human cervical cancer

Recommended dilution: 20-100



The image on the left is immunohistochemistry of paraffin-embedded Human cervical cancer tissue using ml164191(HLA-DQA2 Antibody) at dilution 1/20, on the right is treated with synthetic peptide. (Original magnification:  $\times 200$ )

##### ELISA

Recommended dilution: 5000-10000

联系电话: 4008-898-798, 021-61725725

联系QQ: 2881505695, 2881505696

邮箱: [mlbio\\_cn@yeah.net](mailto:mlbio_cn@yeah.net)

网址: [www.mlbio.cn](http://www.mlbio.cn)