

Anti-SETD1A antibody

Cat. No.	ml164218
Package	25 µl/100 µl/200 µl
Storage	-20°C, pH7.4 PBS, 0.05% NaN ₃ , 40% Glycerol

Product overview

Description	Anti-SETD1A rabbit polyclonal antibody
Applications	ELISA, IHC
Immunogen	Synthetic peptide of human SETD1A
Reactivity	Human
Content	0.72 mg/ml
Host species	Rabbit
Ig class	Immunogen-specific rabbit IgG
Purification	Antigen affinity purification

Target information

Symbol	SETD1A
Full name	SET domain containing 1A
Synonyms	Set1; KMT2F; Set1A
Swissprot	O15047

Target Background

The protein encoded by this gene is a component of a histone methyltransferase (HMT) complex that produces mono-, di-, and trimethylated histone H3 at Lys4. Trimethylation of histone H3 at lysine 4 (H3K4me3) is a chromatin modification known to generally mark the transcription start sites of active genes. The protein contains SET domains, a RNA recognition motif domain and is a member of the class V-like SAM-binding methyltransferase superfamily.

订购热线: 4008-898-798

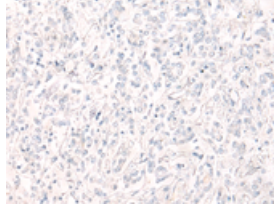
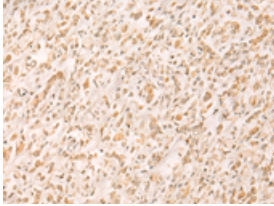
Applications

Immunohistochemistry

Predicted cell location: Nucleus

Positive control: Human gastric cancer

Recommended dilution: 30-150

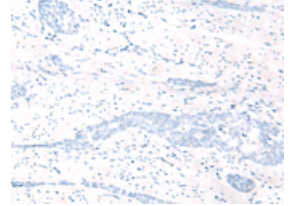
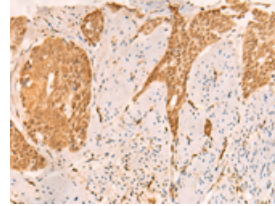


The image on the left is immunohistochemistry of paraffin-embedded Human gastric cancer tissue using ml164218(SETD1A Antibody) at dilution 1/25, on the right is treated with synthetic peptide. (Original magnification: ×200)

Predicted cell location: Nucleus

Positive control: Human esophagus cancer

Recommended dilution: 30-150



The image on the left is immunohistochemistry of paraffin-embedded Human esophagus cancer tissue using ml164218(SETD1A Antibody) at dilution 1/25, on the right is treated with synthetic peptide. (Original magnification: ×200)

ELISA

Recommended dilution: 5000-10000

联系电话: 4008-898-798, 021-61725725

联系QQ: 2881505695, 2881505696

邮箱: mlbio_cn@yeah.net

网址: www.mlbio.cn