

Anti-IFI35 antibody

Cat. No.	ml164233
Package	25 µl/100 µl/200 µl
Storage	-20°C, pH7.4 PBS, 0.05% NaN ₃ , 40% Glycerol

Product overview

Description	Anti-IFI35 rabbit polyclonal antibody
Applications	ELISA, IHC
Immunogen	Synthetic peptide of human IFI35
Reactivity	Human
Content	1.02 mg/ml
Host species	Rabbit
Ig class	Immunogen-specific rabbit IgG
Purification	Antigen affinity purification

Target information

Symbol	IFI35
Full name	interferon induced protein 35
Synonyms	IFP35
Swissprot	P80217

Target Background

The Interferon family of proteins are able to alter the expression of a variety of target genes, thereby controlling various events within the cell. IFI-35 (Interferon-induced 35 kDa protein), also known as IFP35, is a 286 amino acid interferon-induced protein. Localized to the nucleus and expressed in macrophages, fibroblasts and epithelial cells, IFI-35 is a leucine zipper protein that can form homodimers, but, unlike most leucine zipper proteins, cannot bind DNA. Upon induction by IFN- α , IFI-35 associates with Nmi (N-Myc-interacting protein), resulting in the formation of a high molecular weight complex that is thought to play a role in IFN- α signaling and cellular responses. Once complexed with Nmi, IFI-35 is unable to be degraded by the proteasome, suggesting that IFI-35 is protected from degradation only when needed by IFN- α . Two isoforms of IFI-35 exist due to alternative splicing events.

订购热线: 4008-898-798

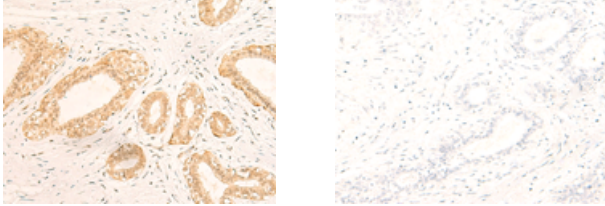
Applications

Immunohistochemistry

Predicted cell location: Nucleus

Positive control: Human breast cancer

Recommended dilution: 30-150



The image on the left is immunohistochemistry of paraffin-embedded Human breast cancer tissue using ml164233(IF135 Antibody) at dilution 1/35, on the right is treated with synthetic peptide. (Original magnification: $\times 200$)

ELISA

Recommended dilution: 5000-10000

联系电话: 4008-898-798, 021-61725725

联系QQ: 2881505695, 2881505696

邮箱: mlbio_cn@yeah.net

网址: www.mlbio.cn