

## Anti-INO80 antibody

<b>Cat. No.</b>	ml164250
<b>Package</b>	25 µl/100 µl/200 µl
<b>Storage</b>	-20°C, pH7.4 PBS, 0.05% NaN <sub>3</sub> , 40% Glycerol

### Product overview

<b>Description</b>	Anti-INO80 rabbit polyclonal antibody
<b>Applications</b>	ELISA, IHC
<b>Immunogen</b>	Synthetic peptide of human INO80
<b>Reactivity</b>	Human, Mouse
<b>Content</b>	2.46 mg/ml
<b>Host species</b>	Rabbit
<b>Ig class</b>	Immunogen-specific rabbit IgG
<b>Purification</b>	Antigen affinity purification

### Target information

<b>Symbol</b>	INO80
<b>Full name</b>	INO80 complex subunit
<b>Synonyms</b>	INOC1; INO80A; hINO80
<b>Swissprot</b>	Q9ULG1

### Target Background

This gene encodes a subunit of the chromatin remodeling complex, which is classified into subfamilies depending on sequence features apart from the conserved ATPase domain. This protein is the catalytic ATPase subunit of the INO80 chromatin remodeling complex, which is characterized by a DNA-binding domain. This protein is proposed to bind DNA and be recruited by the YY1 transcription factor to activate certain genes. Alternative splicing results in multiple transcript variants.

订购热线: 4008-898-798

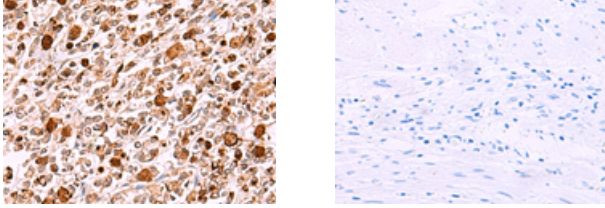
#### Applications

##### Immunohistochemistry

Predicted cell location: Nucleus

Positive control: Human gastric cancer

Recommended dilution: 50-300



The image on the left is immunohistochemistry of paraffin-embedded Human gastric cancer tissue using ml164250(INO80 Antibody) at dilution 1/85, on the right is treated with synthetic peptide. (Original magnification:  $\times 200$ )

##### ELISA

Recommended dilution: 5000-10000

联系电话: 4008-898-798, 021-61725725

联系QQ: 2881505695, 2881505696

邮箱: [mlbio\\_cn@yeah.net](mailto:mlbio_cn@yeah.net)

网址: [www.mlbio.cn](http://www.mlbio.cn)