

Anti-IRGC antibody

Cat. No.	ml164272
Package	25 µl/100 µl/200 µl
Storage	-20°C, pH7.4 PBS, 0.05% NaN ₃ , 40% Glycerol

Product overview

Description	Anti-IRGC rabbit polyclonal antibody
Applications	ELISA, IHC
Immunogen	Synthetic peptide of human IRGC
Reactivity	Human, Rat
Content	0.78 mg/ml
Host species	Rabbit
Ig class	Immunogen-specific rabbit IgG
Purification	Antigen affinity purification

Target information

Symbol	IRGC
Full name	immunity related GTPase cinema
Synonyms	IFGGE; IRGC1; ligp5; CINEMA; R30953_1
Swissprot	Q6NXR0

Target Background

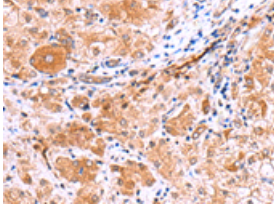
Immunity-related GTPases (IRG) (also known as p47 GTPases) are a family of GTPase proteins found in vertebrates, which play critical roles in mediating innate resistance to intracellular pathogens. IRG genes have been found in a number of mammals and lower species including mice, rats, zebrafish and humans. Most of the mouse genes contain interferon-stimulated response elements which mediate transcriptional activation by IFNs. In humans, only two IRG genes have been found: human IRGC encodes a full-length IRG protein that, like the mouse homologue, is constitutively expressed in testis, while human IRGM encodes a considerably truncated protein that is constitutively expressed in cultured cells including some macrophage cell lines. As the two human genes IRGC and IRGM are not subject to IFN control, it has been suggested that the host resistance mechanism supported by IRG proteins in the mouse is lacking in humans.

订购热线: 4008-898-798

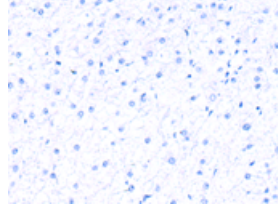
Applications

Immunohistochemistry

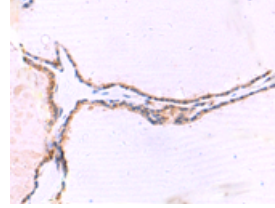
Predicted cell location: Cytoplasm
Positive control: Human liver cancer
Recommended dilution: 30-150



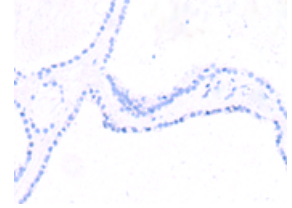
The image on the left is immunohistochemistry of paraffin-embedded Human liver cancer tissue using ml164272(IRGC Antibody) at dilution 1/30, on the right is treated with synthetic peptide. (Original magnification: $\times 200$)



Predicted cell location: Cytoplasm
Positive control: Human thyroid cancer
Recommended dilution: 30-150



The image on the left is immunohistochemistry of paraffin-embedded Human thyroid cancer tissue using ml164272(IRGC Antibody) at dilution 1/30, on the right is treated with synthetic peptide. (Original magnification: $\times 200$)



ELISA

Recommended dilution: 5000-10000

联系电话: 4008-898-798, 021-61725725

联系QQ: 2881505695, 2881505696

邮箱: mlbio_cn@yeah.net

网址: www.mlbio.cn