

## Anti-KANSL1L antibody

**Cat. No.** ml164312  
**Package** 25 µl/100 µl/200 µl  
**Storage** -20°C, pH7.4 PBS, 0.05% NaN<sub>3</sub>, 40% Glycerol

### Product overview

**Description** Anti-KANSL1L rabbit polyclonal antibody  
**Applications** ELISA, IHC  
**Immunogen** Synthetic peptide of human KANSL1L  
**Reactivity** Human  
**Content** 1.08 mg/ml  
**Host species** Rabbit  
**Ig class** Immunogen-specific rabbit IgG  
**Purification** Antigen affinity purification

### Target information

**Symbol** KANSL1L  
**Full name** KAT8 regulatory NSL complex subunit 1 like  
**Synonyms** MSL1v2; C2orf67  
**Swissprot** A0AUZ9

### Target Background

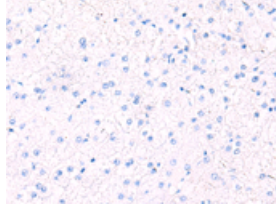
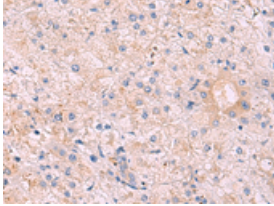
The function of this protein remains unknown.

订购热线: 4008-898-798

### Applications

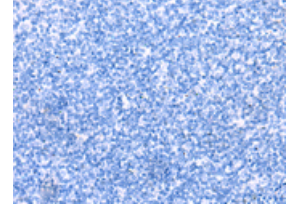
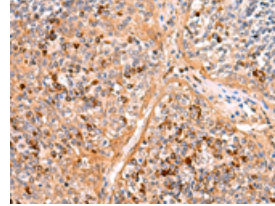
#### Immunohistochemistry

Predicted cell location: Cytoplasm  
Positive control: Human tonsil  
Recommended dilution: 30-150



The image on the left is immunohistochemistry of paraffin-embedded Human tonsil tissue using ml164312(KANSL1L Antibody) at dilution 1/40, on the right is treated with synthetic peptide. (Original magnification:  $\times 200$ )

Predicted cell location: Cytoplasm  
Positive control: Human liver cancer  
Recommended dilution: 30-150



The image on the left is immunohistochemistry of paraffin-embedded Human liver cancer tissue using ml164312(KANSL1L Antibody) at dilution 1/40, on the right is treated with synthetic peptide. (Original magnification:  $\times 200$ )

#### ELISA

Recommended dilution: 5000-10000

联系电话: 4008-898-798, 021-61725725

联系QQ: 2881505695, 2881505696

邮箱: [mlbio\\_cn@yeah.net](mailto:mlbio_cn@yeah.net)

网址: [www.mlbio.cn](http://www.mlbio.cn)