

Anti-KCNU1 antibody

Cat. No.	ml164335
Package	25 µl/100 µl/200 µl
Storage	-20°C, pH7.4 PBS, 0.05% NaN ₃ , 40% Glycerol

Product overview

Description	Anti-KCNU1 rabbit polyclonal antibody
Applications	ELISA, IHC
Immunogen	Synthetic peptide of human KCNU1
Reactivity	Human
Content	1.26 mg/ml
Host species	Rabbit
Ig class	Immunogen-specific rabbit IgG
Purification	Antigen affinity purification

Target information

Symbol	KCNU1
Full name	potassium calcium-activated channel subfamily U member 1
Synonyms	KCa5; Slo3; KCNMC1; KCa5.1; Kcnma3
Swissprot	A8MYU2

Target Background

This gene encodes a member of the potassium channel family of proteins. The encoded voltage-gated ion channel allows the outward flow of potassium ions during plasma membrane hyperpolarization in sperm. Opening of this channel may be regulated by calcium ion levels. Homozygous knockout mice that lack the related mouse gene exhibit male sterility. Alternative splicing results in multiple transcript variants.

订购热线: 4008-898-798

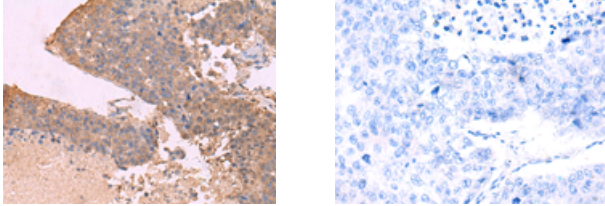
Applications

Immunohistochemistry

Predicted cell location: Cytoplasm

Positive control: Human liver cancer

Recommended dilution: 50-300



The image on the left is immunohistochemistry of paraffin-embedded Human liver cancer tissue using ml164335(KCNU1 Antibody) at dilution 1/45, on the right is treated with synthetic peptide. (Original magnification: ×200)

ELISA

Recommended dilution: 5000-10000

联系电话: 4008-898-798, 021-61725725

联系QQ: 2881505695, 2881505696

邮箱: mlbio_cn@yeah.net

网址: www.mlbio.cn