

Anti-EPHX1 antibody

Cat. No.	ml220019
Package	25 µl/100 µl/200 µl
Storage	-20°C, pH7.4 PBS, 0.05% NaN ₃ , 40% Glycerol

Product overview

Description	Anti-EPHX1 rabbit polyclonal antibody
Applications	ELISA, IHC
Immunogen	Fusion protein of human EPHX1
Reactivity	Human, Mouse, Rat
Content	0.5 mg/ml
Host species	Rabbit
Ig class	Immunogen-specific rabbit IgG
Purification	Antigen affinity purification

Target information

Symbol	EPHX1
Full name	Epoxide hydrolase 1
Synonyms	EPHX
Swissprot	P07099

Target Background

Epoxide hydrolase is a critical biotransformation enzyme that converts epoxides from the degradation of aromatic compounds to trans-dihydrodiols which can be conjugated and excreted from the body. Epoxide hydrolase functions in both the activation and detoxification of exogenous chemicals such as polycyclic aromatic hydrocarbons. Mutations in this gene cause preeclampsia, epoxide hydrolase deficiency or increased epoxide hydrolase activity.

订购热线: 4008-898-798

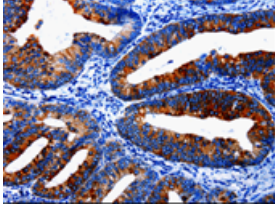
Applications

Immunohistochemistry

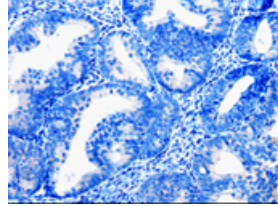
Predicted cell location: Cytoplasm

Positive control: Human cervical cancer

Recommended dilution: 25-50



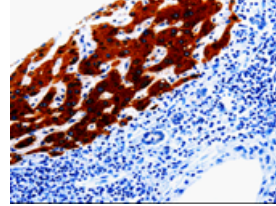
The image on the left is immunohistochemistry of paraffin-embedded Human cervical cancer tissue using ml220019(EPHX1 Antibody) at dilution 1/20, on the right is treated with fusion protein. (Original magnification: ×200)



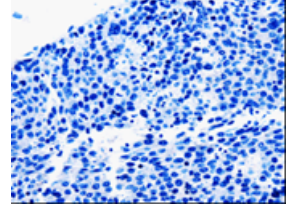
Predicted cell location: Cytoplasm

Positive control: Human liver cancer

Recommended dilution: 25-50



The image on the left is immunohistochemistry of paraffin-embedded Human liver cancer tissue using ml220019(EPHX1 Antibody) at dilution 1/20, on the right is treated with fusion protein. (Original magnification: ×200)



ELISA

Recommended dilution: 500-2000

联系电话: 4008-898-798, 021-61725725

联系QQ: 2881505695, 2881505696

邮箱: mlbio_cn@yeah.net

网址: www.mlbio.cn