

Anti-KLK3 antibody

Cat. No.	ml220021
Package	25 µl/100 µl/200 µl
Storage	-20°C, pH7.4 PBS, 0.05% NaN ₃ , 40% Glycerol

Product overview

Description	Anti-KLK3 rabbit polyclonal antibody
Applications	ELISA, IHC
Immunogen	Fusion protein of human KLK3
Reactivity	Human
Content	0.5 mg/ml
Host species	Rabbit
Ig class	Immunogen-specific rabbit IgG
Purification	Antigen affinity purification

Target information

Symbol	KLK3
Full name	Kallikrein-3
Synonyms	APS, PSA
Swissprot	P07288

Target Background

KLK3 is a member of the kallikrein-related peptidase family secreted by the epithelial cells of the prostate gland and lead to the liquefaction of the seminal coagulum. It is thought to function normally in the liquefaction of seminal coagulum, presumably by hydrolysis of the high molecular mass seminal vesicle protein. Serum level of this protein, called PSA in the clinical setting, is useful in the diagnosis and monitoring of prostatic carcinoma.

订购热线: 4008-898-798

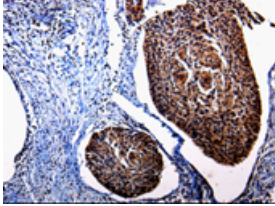
Applications

Immunohistochemistry

Predicted cell location: Cytoplasm

Positive control: Human cervical cancer

Recommended dilution: 25-50

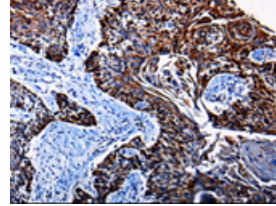


The image is immunohistochemistry of paraffin-embedded Human cervical cancer tissue using ml220021(KLK3 Antibody) at dilution 1/25. (Original magnification: ×200)

Predicted cell location: Cytoplasm

Positive control: Human lung cancer

Recommended dilution: 25-50



The image is immunohistochemistry of paraffin-embedded Human lung cancer tissue using ml220021(KLK3 Antibody) at dilution 1/25. (Original magnification: ×200)

ELISA

Recommended dilution: 500-2000

联系电话: 4008-898-798, 021-61725725

联系QQ: 2881505695, 2881505696

邮箱: mlbio_cn@yeah.net

网址: www.mlbio.cn