

Anti-MAGEA4 antibody

Cat. No.	ml220028
Package	25 µl/100 µl/200 µl
Storage	-20°C, pH7.4 PBS, 0.05% NaN ₃ , 40% Glycerol

Product overview

Description	Anti-MAGEA4 rabbit polyclonal antibody
Applications	ELISA, IHC
Immunogen	Fusion protein of human MAGEA4
Reactivity	Human
Content	0.5 mg/ml
Host species	Rabbit
Ig class	Immunogen-specific rabbit IgG
Purification	Antigen affinity purification

Target information

Symbol	MAGEA4
Full name	Melanoma-associated antigen 4
Synonyms	CT1.4, MAGE-41, MAGE-X2, MAGE4, MAGE4A, MAGE4B, MGC21336
Swissprot	P43358

Target Background

This gene is a member of the MAGEA gene family. The members of this family encode proteins with 50 to 80% sequence identity to each other. The promoters and first exons of the MAGEA genes show considerable variability, suggesting that the existence of this gene family enables the same function to be expressed under different transcriptional controls. The MAGEA genes are clustered at chromosomal location Xq28. They have been implicated in some hereditary disorders, such as dyskeratosis congenita. At least four variants encoding the same protein have been found for this gene.

订购热线: 4008-898-798

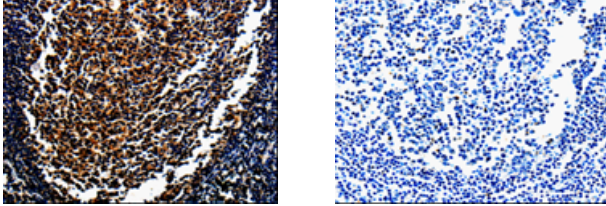
Applications

Immunohistochemistry

Predicted cell location: Cytoplasm

Positive control: Human tonsil

Recommended dilution: 10-50



The image on the left is immunohistochemistry of paraffin-embedded Human tonsil tissue using ml220028(MAGEA4 Antibody) at dilution 1/10, on the right is treated with fusion protein. (Original magnification: $\times 200$)

ELISA

Recommended dilution: 500-2000

联系电话: 4008-898-798, 021-61725725

联系QQ: 2881505695, 2881505696

邮箱: mlbio_cn@yeah.net

网址: www.mlbio.cn