

## Anti-UTS2 antibody

<b>Cat. No.</b>	ml220039
<b>Package</b>	25 µl/100 µl/200 µl
<b>Storage</b>	-20°C, pH7.4 PBS, 0.05% NaN <sub>3</sub> , 40% Glycerol

### Product overview

<b>Description</b>	Anti-UTS2 rabbit polyclonal antibody
<b>Applications</b>	ELISA, IHC
<b>Immunogen</b>	Fusion protein of human UTS2
<b>Reactivity</b>	Human
<b>Content</b>	0.5 mg/ml
<b>Host species</b>	Rabbit
<b>Ig class</b>	Immunogen-specific rabbit IgG
<b>Purification</b>	Antigen affinity purification

### Target information

<b>Symbol</b>	UTS2
<b>Full name</b>	Urotensin 2
<b>Synonyms</b>	UII, U-II, UCN2
<b>Swissprot</b>	O95399

### Target Background

This gene encodes a mature peptide that is an active cyclic heptapeptide absolutely conserved from lamprey to human. The active peptide acts as a vasoconstrictor and is expressed only in brain tissue. Despite the gene family name similarity, this gene is not homologous to urocortin, a member of the sauvagine/corticotropin-releasing factor/urotensin I family. Most of the proprotein is cleaved to make the mature peptide. Transcript variants encoding different preprotein isoforms have been described for this gene.

订购热线: 4008-898-798

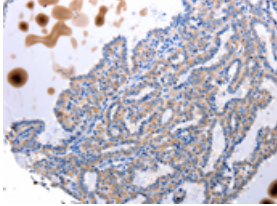
### Applications

#### Immunohistochemistry

Predicted cell location: Cytoplasm

Positive control: Human thyroid cancer

Recommended dilution: 50-200

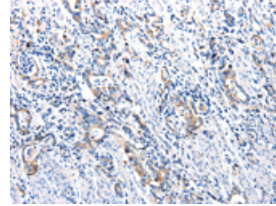


The image is immunohistochemistry of paraffin-embedded Human thyroid cancer tissue using ml220039(UTS2 Antibody) at dilution 1/100. (Original magnification: ×200)

Predicted cell location: Cytoplasm

Positive control: Human stomach cancer

Recommended dilution: 50-200



The image is immunohistochemistry of paraffin-embedded Human stomach cancer tissue using ml220039(UTS2 Antibody) at dilution 1/100. (Original magnification: ×200)

#### ELISA

Recommended dilution: 500-10000

联系电话: 4008-898-798, 021-61725725

联系QQ: 2881505695, 2881505696

邮箱: [mlbio\\_cn@yeah.net](mailto:mlbio_cn@yeah.net)

网址: [www.mlbio.cn](http://www.mlbio.cn)