

Anti-COX7B2 antibody

Cat. No.	ml220118
Package	25 µl/100 µl/200 µl
Storage	-20°C, pH7.4 PBS, 0.05% NaN ₃ , 40% Glycerol

Product overview

Description	Anti-COX7B2 rabbit polyclonal antibody
Applications	ELISA, IHC
Immunogen	Fusion protein of human COX7B2
Reactivity	Human
Content	0.2 mg/ml
Host species	Rabbit
Ig class	Immunogen-specific rabbit IgG
Purification	Antigen affinity purification

Target information

Symbol	COX7B2
Full name	cytochrome c oxidase subunit VIIb2
Synonyms	
Swissprot	Q8TF08

Target Background

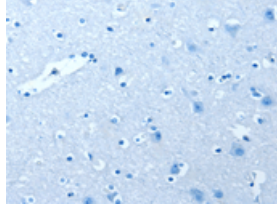
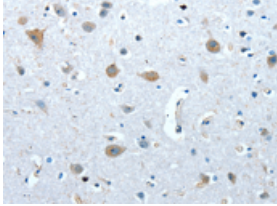
This protein is one of the nuclear-coded polypeptide chains of cytochrome c oxidase, the terminal oxidase in mitochondrial electron transport. The COX7B2 gene encodes an 80-residue protein and has a 499-bp mRNA transcript. The COX7B2 gene contains 3 exons and maps to chromosome 4p12. For a discussion of a possible association between variation in the COX7B2 gene and susceptibility to the development of nasopharyngeal carcinoma, see NPCA1.

订购热线: 4008-898-798

Applications

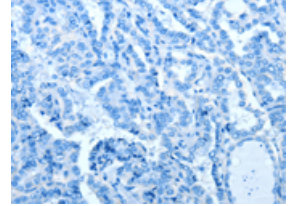
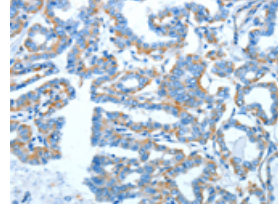
Immunohistochemistry

Predicted cell location: Cytoplasm
Positive control: Human brain
Recommended dilution: 15-50



The image on the left is immunohistochemistry of paraffin-embedded Human brain tissue using ml220118(COX7B2 Antibody) at dilution 1/20, on the right is treated with fusion protein. (Original magnification: ×200)

Predicted cell location: Cytoplasm
Positive control: Human thyroid cancer
Recommended dilution: 15-50



The image on the left is immunohistochemistry of paraffin-embedded Human thyroid cancer tissue using ml220118(COX7B2 Antibody) at dilution 1/20, on the right is treated with fusion protein. (Original magnification: ×200)

ELISA

Recommended dilution: 1000-2000

联系电话: 4008-898-798, 021-61725725

联系QQ: 2881505695, 2881505696

邮箱: mlbio_cn@yeah.net

网址: www.mlbio.cn