

Anti-SNCG antibody

Cat. No.	ml220132
Package	25 µl/100 µl/200 µl
Storage	-20°C, pH7.4 PBS, 0.05% NaN ₃ , 40% Glycerol

Product overview

Description	Anti-SNCG rabbit polyclonal antibody
Applications	ELISA, IHC
Immunogen	Fusion protein of human SNCG
Reactivity	Human
Content	0.6 mg/ml
Host species	Rabbit
Ig class	Immunogen-specific rabbit IgG
Purification	Antigen affinity purification

Target information

Symbol	SNCG
Full name	synuclein, gamma (breast cancer-specific protein 1)
Synonyms	SR; BCSG1
Swissprot	O76070

Target Background

This gene encodes a member of the synuclein family of proteins which are believed to be involved in the pathogenesis of neurodegenerative diseases. Mutations in this gene have also been associated with breast tumor development.

订购热线: 4008-898-798

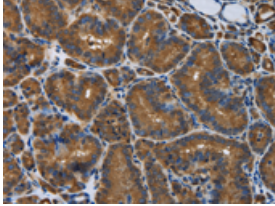
Applications

Immunohistochemistry

Predicted cell location: Cytoplasm

Positive control: Human thyroid cancer

Recommended dilution: 50-200

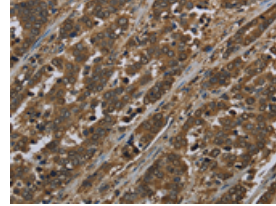


The image is immunohistochemistry of paraffin-embedded Human thyroid cancer tissue using ml220132(SNCG Antibody) at dilution 1/50. (Original magnification: ×200)

Predicted cell location: Cytoplasm

Positive control: Human liver cancer

Recommended dilution: 50-200



The image is immunohistochemistry of paraffin-embedded Human liver cancer tissue using ml220132(SNCG Antibody) at dilution 1/50. (Original magnification: ×200)

ELISA

Recommended dilution: 2000-5000

联系电话: 4008-898-798, 021-61725725

联系QQ: 2881505695, 2881505696

邮箱: mlbio_cn@yeah.net

网址: www.mlbio.cn