

Anti-BCL2L12 antibody

Cat. No.	ml220154
Package	25 µl/100 µl/200 µl
Storage	-20°C, pH7.4 PBS, 0.05% NaN ₃ , 40% Glycerol

Product overview

Description	Anti-BCL2L12 rabbit polyclonal antibody
Applications	ELISA, IHC
Immunogen	Fusion protein of human BCL2L12
Reactivity	Human
Content	0.2 mg/ml
Host species	Rabbit
Ig class	Immunogen-specific rabbit IgG
Purification	Antigen affinity purification

Target information

Symbol	BCL2L12
Full name	BCL2-like 12 (proline rich)
Synonyms	
Swissprot	Q9HB09

Target Background

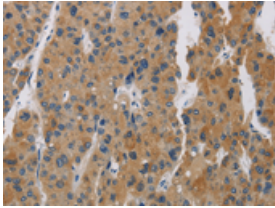
This gene encodes a member of a family of proteins containing a Bcl-2 homology domain 2 (BH2). The encoded protein is an anti-apoptotic factor that acts as an inhibitor of caspases 3 and 7 in the cytoplasm. In the nucleus, it binds to the p53 tumor suppressor protein, preventing its association with target genes. Overexpression of this gene has been detected in a number of different cancers. There is a pseudogene for this gene on chromosome 3. Alternative splicing results in multiple transcript variants

订购热线: 4008-898-798

Applications

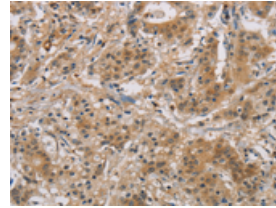
Immunohistochemistry

Predicted cell location: Cytoplasm
Positive control: Human liver cancer
Recommended dilution: 25-100



The image is immunohistochemistry of paraffin-embedded Human liver cancer tissue using ml220154(BCL2L12 Antibody) at dilution 1/20. (Original magnification: ×200)

Predicted cell location: Cytoplasm
Positive control: Human gastric cancer
Recommended dilution: 25-100



The image is immunohistochemistry of paraffin-embedded Human gastric cancer tissue using ml220154(BCL2L12 Antibody) at dilution 1/20. (Original magnification: ×200)

ELISA

Recommended dilution: 1000-2000

联系电话: 4008-898-798, 021-61725725

联系QQ: 2881505695, 2881505696

邮箱: mlbio_cn@yeah.net

网址: www.mlbio.cn