

## Anti-IL17RD antibody

<b>Cat. No.</b>	ml220169
<b>Package</b>	25 µl/100 µl/200 µl
<b>Storage</b>	-20°C, pH7.4 PBS, 0.05% NaN <sub>3</sub> , 40% Glycerol

### Product overview

<b>Description</b>	Anti-IL17RD rabbit polyclonal antibody
<b>Applications</b>	ELISA, IHC
<b>Immunogen</b>	Fusion protein of human IL17RD
<b>Reactivity</b>	Human, Mouse
<b>Content</b>	0.2 mg/ml
<b>Host species</b>	Rabbit
<b>Ig class</b>	Immunogen-specific rabbit IgG
<b>Purification</b>	Antigen affinity purification

### Target information

<b>Symbol</b>	IL17RD
<b>Full name</b>	Interleukin-17 receptor D
<b>Synonyms</b>	SEF, IL-17RD, IL17RLM
<b>Swissprot</b>	Q8NFM7

### Target Background

This gene encodes a membrane protein belonging to the interleukin-17 receptor (IL-17R) protein family. The encoded protein is a component of the interleukin-17 receptor signaling complex, and the interaction between this protein and IL-17R does not require the interleukin (PMID: 19079364). The gene product also affects fibroblast growth factor signaling, inhibiting or stimulating growth through MAPK/ERK signaling.

订购热线: 4008-898-798

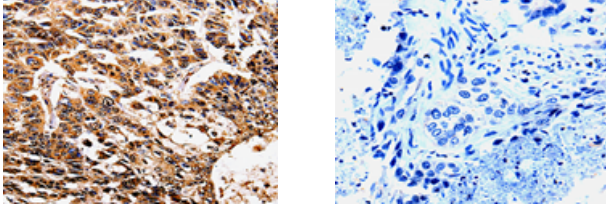
#### Applications

##### Immunohistochemistry

Predicted cell location: Cytoplasm, Cell membrane

Positive control: Human lung cancer

Recommended dilution: 5-20



The image on the left is immunohistochemistry of paraffin-embedded Human lung cancer tissue using ml220169(IL17RD Antibody) at dilution 1/5, on the right is treated with fusion protein. (Original magnification: ×200)

##### ELISA

Recommended dilution: 500-2000

联系电话: 4008-898-798, 021-61725725

联系QQ: 2881505695, 2881505696

邮箱: [mlbio\\_cn@yeah.net](mailto:mlbio_cn@yeah.net)

网址: [www.mlbio.cn](http://www.mlbio.cn)