

Anti-CEACAM21 antibody

Cat. No.	ml220409
Package	25 µl/100 µl/200 µl
Storage	-20°C, pH7.4 PBS, 0.05% NaN ₃ , 40% Glycerol

Product overview

Description	Anti-CEACAM21 rabbit polyclonal antibody
Applications	ELISA, IHC
Immunogen	Fusion protein of human CEACAM21
Reactivity	Human
Content	0.3 mg/ml
Host species	Rabbit
Ig class	Immunogen-specific rabbit IgG
Purification	Antigen affinity purification

Target information

Symbol	CEACAM21
Full name	carcinoembryonic antigen-related cell adhesion molecule 21
Synonyms	CEACAM3, R29124_1
Swissprot	Q3KPI0

Target Background

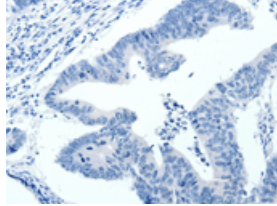
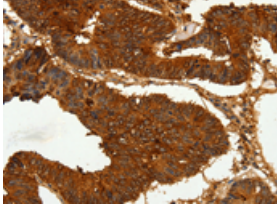
CEACAM21 is a gene which encodes carcinoembryonic antigen. It belongs to the immunoglobulin superfamily-CEA family. Three isoforms of the human protein are produced by alternative splicing. High levels of expression in hematopoietic system, brain and muscle.

订购热线: 4008-898-798

Applications

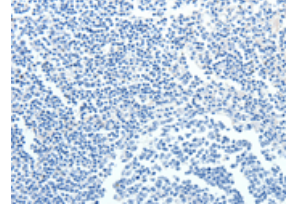
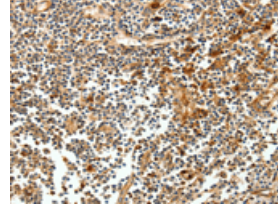
Immunohistochemistry

Predicted cell location: Cytoplasm, Cell membrane
Positive control: Human colon cancer
Recommended dilution: 50-200



The image on the left is immunohistochemistry of paraffin-embedded Human colon cancer tissue using ml220409(CEACAM21 Antibody) at dilution 1/60, on the right is treated with fusion protein. (Original magnification: ×200)

Predicted cell location: Cytoplasm, Cell membrane
Positive control: Human tonsil
Recommended dilution: 50-200



The image on the left is immunohistochemistry of paraffin-embedded Human tonsil tissue using ml220409(CEACAM21 Antibody) at dilution 1/60, on the right is treated with fusion protein. (Original magnification: ×200)

ELISA

Recommended dilution: 2000-5000

联系电话: 4008-898-798, 021-61725725

联系QQ: 2881505695, 2881505696

邮箱: mlbio_cn@yeah.net

网址: www.mlbio.cn