

Anti-SLAMF7 antibody

Cat. No.	ml220481
Package	25 µl/100 µl/200 µl
Storage	-20°C, pH7.4 PBS, 0.05% NaN ₃ , 40% Glycerol

Product overview

Description	Anti-SLAMF7 rabbit polyclonal antibody
Applications	ELISA, IHC
Immunogen	Fusion protein of human SLAMF7
Reactivity	Human
Content	2.5 mg/ml
Host species	Rabbit
Ig class	Immunogen-specific rabbit IgG
Purification	Antigen affinity purification

Target information

Symbol	SLAMF7
Full name	SLAM family member 7
Synonyms	19A; CS1; CD319; CRACC
Swissprot	Q9NQ25

Target Background

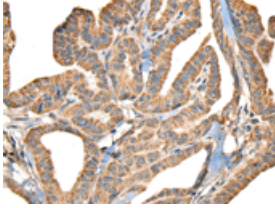
Self-ligand receptor of the signaling lymphocytic activation molecule (SLAM) family. SLAM receptors triggered by homo- or heterotypic cell-cell interactions are modulating the activation and differentiation of a wide variety of immune cells and thus are involved in the regulation and interconnection of both innate and adaptive immune response. Activities are controlled by presence or absence of small cytoplasmic adapter proteins, SH2D1A/SAP and/or SH2D1B/EAT-2. Isoform 1 mediates NK cell activation through a SH2D1A-independent extracellular signal-regulated ERK-mediated pathway (PubMed:11698418). Positively regulates NK cell functions by a mechanism dependent on phosphorylated SH2D1B. Downstream signaling implicates PLCG1, PLCG2 and PI3K (PubMed:16339536). In addition to heterotypic NK cells-target cells interactions also homotypic interactions between NK cells may contribute to activation. However, in the absence of SH2D1B, inhibits NK cell function. Acts also inhibitory in T-cells (By similarity). May play a role in lymphocyte adhesion (PubMed:11802771). In LPS-activated monocytes negatively regulates production of proinflammatory cytokines (PubMed:23695528).

订购热线: 4008-898-798

Applications

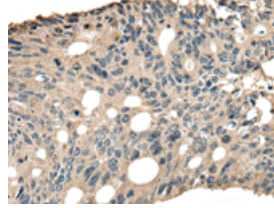
Immunohistochemistry

Predicted cell location: Cell membrane
Positive control: Human thyroid cancer
Recommended dilution: 30-150



The image is immunohistochemistry of paraffin-embedded Human thyroid cancer tissue using ml220481(SLAMF7 Antibody) at dilution 1/30. (Original magnification: ×200)

Predicted cell location: Cell membrane
Positive control: Human colorectal cancer
Recommended dilution: 30-150



The image is immunohistochemistry of paraffin-embedded Human colorectal cancer tissue using ml220481(SLAMF7 Antibody) at dilution 1/30. (Original magnification: ×200)

ELISA

Recommended dilution: 5000-10000

联系电话: 4008-898-798, 021-61725725

联系QQ: 2881505695, 2881505696

邮箱: mlbio_cn@yeah.net

网址: www.mlbio.cn