

## Anti-GJA5 antibody

<b>Cat. No.</b>	ml220495
<b>Package</b>	25 µl/100 µl/200 µl
<b>Storage</b>	-20°C, pH7.4 PBS, 0.05% NaN <sub>3</sub> , 40% Glycerol

### Product overview

<b>Description</b>	Anti-GJA5 rabbit polyclonal antibody
<b>Applications</b>	ELISA, IHC
<b>Immunogen</b>	Fusion protein of human GJA5
<b>Reactivity</b>	Human
<b>Content</b>	0.5 mg/ml
<b>Host species</b>	Rabbit
<b>Ig class</b>	Immunogen-specific rabbit IgG
<b>Purification</b>	Antigen affinity purification

### Target information

<b>Symbol</b>	GJA5
<b>Full name</b>	gap junction protein alpha 5
<b>Synonyms</b>	CX40; ATFB11
<b>Swissprot</b>	P36382

### Target Background

This gene is a member of the connexin gene family. The encoded protein is a component of gap junctions, which are composed of arrays of intercellular channels that provide a route for the diffusion of low molecular weight materials from cell to cell. Mutations in this gene may be associated with atrial fibrillation. Alternatively spliced transcript variants encoding the same isoform have been described.

订购热线: 4008-898-798

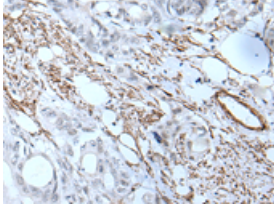
#### Applications

##### Immunohistochemistry

Predicted cell location: Nucleus and Cell membrane

Positive control: Human colorectal cancer

Recommended dilution: 30-150

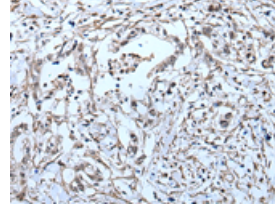


The image is immunohistochemistry of paraffin-embedded Human colorectal cancer tissue using ml220495(GJA5 Antibody) at dilution 1/50. (Original magnification: ×200)

Predicted cell location: Nucleus and Cell membrane

Positive control: Human gastric cancer

Recommended dilution: 30-150



The image is immunohistochemistry of paraffin-embedded Human gastric cancer tissue using ml220495(GJA5 Antibody) at dilution 1/50. (Original magnification: ×200)

##### ELISA

Recommended dilution: 5000-10000

联系电话: 4008-898-798, 021-61725725

联系QQ: 2881505695, 2881505696

邮箱: [mlbio\\_cn@yeah.net](mailto:mlbio_cn@yeah.net)

网址: [www.mlbio.cn](http://www.mlbio.cn)