

## Anti-TNFRSF10C antibody

<b>Cat. No.</b>	ml220535
<b>Package</b>	25 µl/100 µl/200 µl
<b>Storage</b>	-20°C, pH7.4 PBS, 0.05% NaN <sub>3</sub> , 40% Glycerol

### Product overview

<b>Description</b>	Anti-TNFRSF10C rabbit polyclonal antibody
<b>Applications</b>	ELISA, IHC
<b>Immunogen</b>	Fusion protein of human TNFRSF10C
<b>Reactivity</b>	Human
<b>Content</b>	0.3 mg/ml
<b>Host species</b>	Rabbit
<b>Ig class</b>	Immunogen-specific rabbit IgG
<b>Purification</b>	Antigen affinity purification

### Target information

<b>Symbol</b>	TNFRSF10C
<b>Full name</b>	tumor necrosis factor receptor superfamily member 10c
<b>Synonyms</b>	LIT; DCR1; TRID; CD263; TRAILR3; TRAIL-R3; DCR1-TNFR
<b>Swissprot</b>	O14798

### Target Background

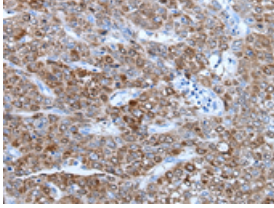
The protein encoded by this gene is a member of the TNF-receptor superfamily. This receptor contains an extracellular TRAIL-binding domain and a transmembrane domain, but no cytoplasmic death domain. This receptor is not capable of inducing apoptosis, and is thought to function as an antagonistic receptor that protects cells from TRAIL-induced apoptosis. This gene was found to be a p53-regulated DNA damage-inducible gene. The expression of this gene was detected in many normal tissues but not in most cancer cell lines, which may explain the specific sensitivity of cancer cells to the apoptosis-inducing activity of TRAIL.

订购热线: 4008-898-798

#### Applications

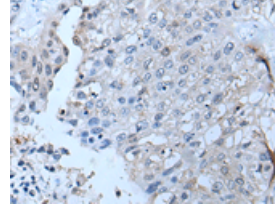
##### Immunohistochemistry

Predicted cell location: Cytoplasm and Cell membrane  
Positive control: Human liver cancer  
Recommended dilution: 25-100



The image is immunohistochemistry of paraffin-embedded Human liver cancer tissue using ml220535(TNFRSF10C Antibody) at dilution 1/30. (Original magnification: ×200)

Predicted cell location: Cytoplasm and Cell membrane  
Positive control: Human lung cancer  
Recommended dilution: 25-100



The image is immunohistochemistry of paraffin-embedded Human lung cancer tissue using ml220535(TNFRSF10C Antibody) at dilution 1/30. (Original magnification: ×200)

##### ELISA

Recommended dilution: 2000-5000

联系电话: 4008-898-798, 021-61725725

联系QQ: 2881505695, 2881505696

邮箱: [mlbio\\_cn@yeah.net](mailto:mlbio_cn@yeah.net)

网址: [www.mlbio.cn](http://www.mlbio.cn)