

## Anti-DOK4 antibody

<b>Cat. No.</b>	ml220562
<b>Package</b>	25 µl/100 µl/200 µl
<b>Storage</b>	-20°C, pH7.4 PBS, 0.05% NaN <sub>3</sub> , 40% Glycerol

### Product overview

<b>Description</b>	Anti-DOK4 rabbit polyclonal antibody
<b>Applications</b>	ELISA, IHC
<b>Immunogen</b>	Full length fusion protein
<b>Reactivity</b>	Human, Mouse
<b>Content</b>	0.4 mg/ml
<b>Host species</b>	Rabbit
<b>Ig class</b>	Immunogen-specific rabbit IgG
<b>Purification</b>	Antigen affinity purification

### Target information

<b>Symbol</b>	DOK4
<b>Full name</b>	docking protein 4
<b>Synonyms</b>	IRS5; IRS-5
<b>Swissprot</b>	Q8TEW6

### Target Background

DOK proteins are enzymatically inert adaptor or scaffolding proteins. They provide a docking platform for the assembly of multimolecular signaling complexes. DOK4 functions in RET-mediated neurite outgrowth and plays a positive role in activation of the MAP kinase pathway (By similarity). Putative link with downstream effectors of RET in neuronal differentiation. May be involved in the regulation of the immune response induced by T-cells.

订购热线: 4008-898-798

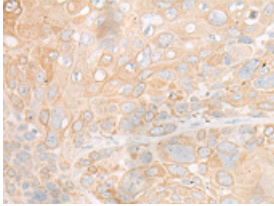
#### Applications

##### Immunohistochemistry

Predicted cell location: Cytoplasm

Positive control: Human esophagus cancer

Recommended dilution: 20-100

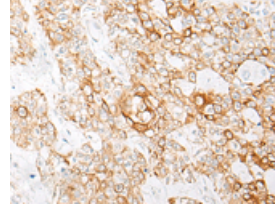


The image is immunohistochemistry of paraffin-embedded Human esophagus cancer tissue using ml220562(DOK4 Antibody) at dilution 1/25. (Original magnification: ×200)

Predicted cell location: Cytoplasm

Positive control: Human prostate cancer

Recommended dilution: 20-100



The image is immunohistochemistry of paraffin-embedded Human prostate cancer tissue using ml220562(DOK4 Antibody) at dilution 1/25. (Original magnification: ×200)

##### ELISA

Recommended dilution: 1000-2000

联系电话: 4008-898-798, 021-61725725

联系QQ: 2881505695, 2881505696

邮箱: [mlbio\\_cn@yeah.net](mailto:mlbio_cn@yeah.net)

网址: [www.mlbio.cn](http://www.mlbio.cn)