

Anti-ENPP5 antibody

Cat. No.	ml220593
Package	25 µl/100 µl/200 µl
Storage	-20°C, pH7.4 PBS, 0.05% NaN ₃ , 40% Glycerol

Product overview

Description	Anti-ENPP5 rabbit polyclonal antibody
Applications	ELISA, IHC
Immunogen	Fusion protein of human ENPP5
Reactivity	Human, Mouse, Rat
Content	1.3 mg/ml
Host species	Rabbit
Ig class	Immunogen-specific rabbit IgG
Purification	Antigen affinity purification

Target information

Symbol	ENPP5
Full name	ectonucleotide pyrophosphatase/phosphodiesterase 5 (putative)
Synonyms	NPP-5
Swissprot	Q9UJA9

Target Background

ENPP5 is a single-pass membrane protein that belongs to the nucleotide pyrophosphatase/phosphodiesterase family. It may play a role in neuronal cell communication, and it lacks nucleotide pyrophosphatase and lysopholipase D activity.

订购热线: 4008-898-798

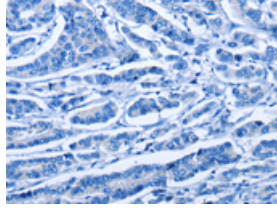
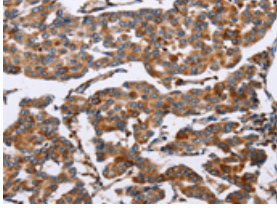
Applications

Immunohistochemistry

Predicted cell location: Cytoplasm

Positive control: Human breast cancer

Recommended dilution: 100-300

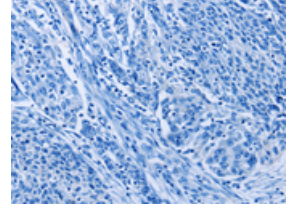
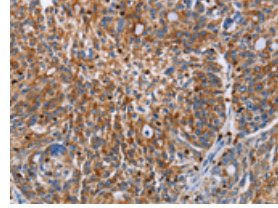


The image on the left is immunohistochemistry of paraffin-embedded Human breast cancer tissue using ml220593(ENPP5 Antibody) at dilution 1/60, on the right is treated with fusion protein. (Original magnification: $\times 200$)

Predicted cell location: Cytoplasm

Positive control: Human ovarian cancer

Recommended dilution: 100-300



The image on the left is immunohistochemistry of paraffin-embedded Human ovarian cancer tissue using ml220593(ENPP5 Antibody) at dilution 1/60, on the right is treated with fusion protein. (Original magnification: $\times 200$)

ELISA

Recommended dilution: 2000-10000

联系电话: 4008-898-798, 021-61725725

联系QQ: 2881505695, 2881505696

邮箱: mlbio_cn@yeah.net

网址: www.mlbio.cn