

Anti-ENPP6 antibody

Cat. No.	ml220594
Package	25 µl/100 µl/200 µl
Storage	-20°C, pH7.4 PBS, 0.05% NaN ₃ , 40% Glycerol

Product overview

Description	Anti-ENPP6 rabbit polyclonal antibody
Applications	ELISA, IHC
Immunogen	Fusion protein of human ENPP6
Reactivity	Human, Mouse, Rat
Content	0.3 mg/ml
Host species	Rabbit
Ig class	Immunogen-specific rabbit IgG
Purification	Antigen affinity purification

Target information

Symbol	ENPP6
Full name	ectonucleotide pyrophosphatase/phosphodiesterase 6
Synonyms	NPP6
Swissprot	Q6UWR7

Target Background

Choline-specific glycerophosphodiester phosphodiesterase. Hydrolyzes lysophosphatidylcholine (LPC) to form monoacylglycerol and phosphorylcholine but not lysophosphatidic acid, showing it has a lysophospholipase C activity. Has a preference for LPC with short (12:0 and 14:0) or polyunsaturated (18:2 and 20:4) fatty acids. Also hydrolyzes glycerophosphorylcholine and sphingosylphosphorylcholine efficiently. Hydrolyzes the classical substrate for phospholipase C, p-nitrophenyl phosphorylcholine in vitro, while it does not hydrolyze the classical nucleotide phosphodiesterase substrate, p-nitrophenyl thymidine 5'-monophosphate. Does not hydrolyze diacyl phospholipids such as phosphatidylethanolamine, phosphatidylinositol, phosphatidylserine, phosphatidylglycerol and phosphatidic acid.

订购热线: 4008-898-798

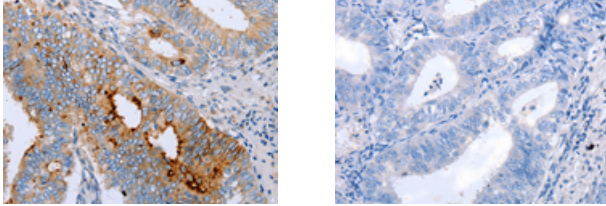
Applications

Immunohistochemistry

Predicted cell location: Cytoplasm, Cell membrane

Positive control: Human cervical cancer

Recommended dilution: 10-50



The image on the left is immunohistochemistry of paraffin-embedded Human cervical cancer tissue using ml220594(ENPP6 Antibody) at dilution 1/15, on the right is treated with fusion protein. (Original magnification: ×200)

ELISA

Recommended dilution: 1000-2000

联系电话: 4008-898-798, 021-61725725

联系QQ: 2881505695, 2881505696

邮箱: mlbio_cn@yeah.net

网址: www.mlbio.cn