

Anti-IL2 antibody

| | |
|-----------------|---|
| Cat. No. | ml220822 |
| Package | 25 µl/100 µl/200 µl |
| Storage | -20°C, pH7.4 PBS, 0.05% NaN ₃ , 40% Glycerol |

Product overview

| | |
|---------------------|-------------------------------------|
| Description | Anti-IL2 rabbit polyclonal antibody |
| Applications | ELISA, IHC |
| Immunogen | Full length fusion protein |
| Reactivity | Human |
| Content | 0.5 mg/ml |
| Host species | Rabbit |
| Ig class | Immunogen-specific rabbit IgG |
| Purification | Antigen affinity purification |

Target information

| | |
|------------------|------------------------|
| Symbol | IL2 |
| Full name | interleukin 2 |
| Synonyms | IL-2; TCGF; lymphokine |
| Swissprot | P60568 |

Target Background

The protein encoded by this gene is a secreted cytokine that is important for the proliferation of T and B lymphocytes. The receptor of this cytokine is a heterotrimeric protein complex whose gamma chain is also shared by interleukin 4 (IL4) and interleukin 7 (IL7). The expression of this gene in mature thymocytes is monoallelic, which represents an unusual regulatory mode for controlling the precise expression of a single gene. The targeted disruption of a similar gene in mice leads to ulcerative colitis-like disease, which suggests an essential role of this gene in the immune response to antigenic stimuli.

订购热线: 4008-898-798

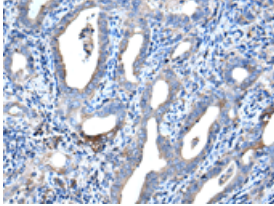
Applications

Immunohistochemistry

Predicted cell location: Secreted

Positive control: Human cervical cancer

Recommended dilution: 25-100

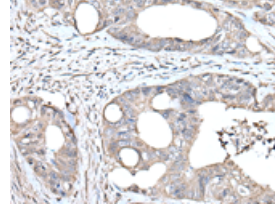


The image is immunohistochemistry of paraffin-embedded Human cervical cancer tissue using ml220822(IL2 Antibody) at dilution 1/35. (Original magnification: ×200)

Predicted cell location: Secreted

Positive control: Human colorectal cancer

Recommended dilution: 25-100



The image is immunohistochemistry of paraffin-embedded Human colorectal cancer tissue using ml220822(IL2 Antibody) at dilution 1/35. (Original magnification: ×200)

ELISA

Recommended dilution: 2000-5000

联系电话: 4008-898-798, 021-61725725

联系QQ: 2881505695, 2881505696

邮箱: mlbio_cn@yeah.net

网址: www.mlbio.cn