

Anti-INHA antibody

Cat. No.	ml220860
Package	25 µl/100 µl/200 µl
Storage	-20°C, pH7.4 PBS, 0.05% NaN ₃ , 40% Glycerol

Product overview

Description	Anti-INHA rabbit polyclonal antibody
Applications	ELISA, IHC
Immunogen	Fusion protein of human INHA
Reactivity	Human, Mouse, Rat
Content	0.7 mg/ml
Host species	Rabbit
Ig class	Immunogen-specific rabbit IgG
Purification	Antigen affinity purification

Target information

Symbol	INHA
Full name	inhibin, alpha
Synonyms	
Swissprot	P05111

Target Background

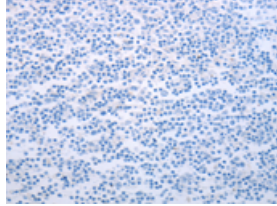
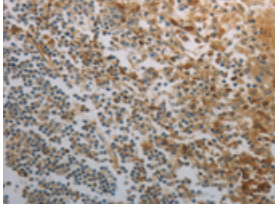
This gene encodes the alpha subunit of inhibins A and B protein complexes. These complexes negatively regulate follicle stimulating hormone secretion from the pituitary gland. Inhibins have also been implicated in regulating numerous cellular processes including cell proliferation, apoptosis, immune response and hormone secretion.

订购热线: 4008-898-798

Applications

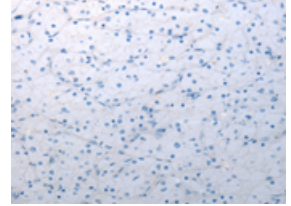
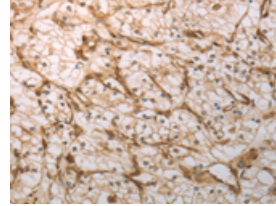
Immunohistochemistry

Predicted cell location: Cytoplasm
Positive control: Human tonsil
Recommended dilution: 150-500



The image on the left is immunohistochemistry of paraffin-embedded Human tonsil tissue using ml220860(INHA Antibody) at dilution 1/150, on the right is treated with fusion protein. (Original magnification: ×200)

Predicted cell location: Cytoplasm
Positive control: Human renal cancer
Recommended dilution: 150-500



The image on the left is immunohistochemistry of paraffin-embedded Human renal cancer tissue using ml220860(INHA Antibody) at dilution 1/150, on the right is treated with fusion protein. (Original magnification: ×200)

ELISA

Recommended dilution: 1000-5000

联系电话: 4008-898-798, 021-61725725

联系QQ: 2881505695, 2881505696

邮箱: mlbio_cn@yeah.net

网址: www.mlbio.cn