

Anti-IRF4 antibody

Cat. No.	ml220874
Package	25 µl/100 µl/200 µl
Storage	-20°C, pH7.4 PBS, 0.05% NaN ₃ , 40% Glycerol

Product overview

Description	Anti-IRF4 rabbit polyclonal antibody
Applications	ELISA, IHC
Immunogen	Fusion protein of human IRF4
Reactivity	Human, Mouse
Content	0.2 mg/ml
Host species	Rabbit
Ig class	Immunogen-specific rabbit IgG
Purification	Antigen affinity purification

Target information

Symbol	IRF4
Full name	interferon regulatory factor 4
Synonyms	MUM1; LSIRF; SHEP8; NF-EM5
Swissprot	Q15306

Target Background

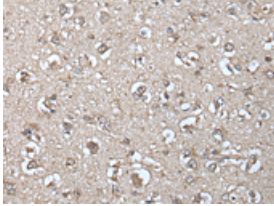
The protein encoded by this gene belongs to the IRF (interferon regulatory factor) family of transcription factors, characterized by a unique tryptophan pentad repeat DNA-binding domain. The IRFs are important in the regulation of interferons in response to infection by virus, and in the regulation of interferon-inducible genes. This family member is lymphocyte specific and negatively regulates Toll-like-receptor (TLR) signaling that is central to the activation of innate and adaptive immune systems. A chromosomal translocation involving this gene and the IgH locus, t(6;14)(p25;q32), may be a cause of multiple myeloma. Alternatively spliced transcript variants have been found for this gene.

订购热线: 4008-898-798

Applications

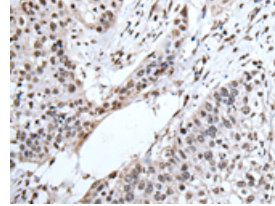
Immunohistochemistry

Predicted cell location: Nucleus
Positive control: Human brain
Recommended dilution: 30-150



The image is immunohistochemistry of paraffin-embedded Human brain tissue using ml220874(IRF4 Antibody) at dilution 1/40. (Original magnification: ×200)

Predicted cell location: Nucleus
Positive control: Human lung cancer
Recommended dilution: 30-150



The image is immunohistochemistry of paraffin-embedded Human lung cancer tissue using ml220874(IRF4 Antibody) at dilution 1/40. (Original magnification: ×200)

ELISA

Recommended dilution: 2000-5000

联系电话: 4008-898-798, 021-61725725

联系QQ: 2881505695, 2881505696

邮箱: mlbio_cn@yeah.net

网址: www.mlbio.cn