

Anti-LGR5 antibody

Cat. No.	ml220920
Package	25 µl/100 µl/200 µl
Storage	-20°C, pH7.4 PBS, 0.05% NaN ₃ , 40% Glycerol

Product overview

Description	Anti-LGR5 rabbit polyclonal antibody
Applications	ELISA, IHC
Immunogen	Fusion protein of human LGR5
Reactivity	Human, Mouse, Rat
Content	0.3 mg/ml
Host species	Rabbit
Ig class	Immunogen-specific rabbit IgG
Purification	Antigen affinity purification

Target information

Symbol	LGR5
Full name	leucine-rich repeat containing G protein-coupled receptor 5
Synonyms	FEX, HG38, GPR49, GPR67, GRP49
Swissprot	O75473

Target Background

This gene encodes Orphan receptor. Stem cell marker of the intestinal epithelium and the hair follicle. Target gene of Wnt signaling.

订购热线: 4008-898-798

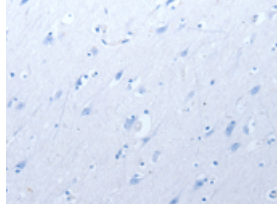
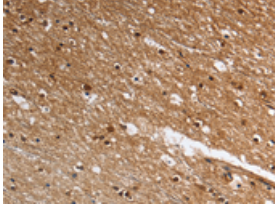
Applications

Immunohistochemistry

Predicted cell location: Cytoplasm, Nucleus

Positive control: Human brain

Recommended dilution: 25-100



The image on the left is immunohistochemistry of paraffin-embedded Human brain tissue using ml220920(LGR5 Antibody) at dilution 1/25, on the right is treated with fusion protein. (Original magnification: ×200)

ELISA

Recommended dilution: 1000-5000

联系电话: 4008-898-798, 021-61725725

联系QQ: 2881505695, 2881505696

邮箱: mlbio_cn@yeah.net

网址: www.mlbio.cn