

## Anti-NME4 antibody

<b>Cat. No.</b>	ml221043
<b>Package</b>	25 µl/100 µl/200 µl
<b>Storage</b>	-20°C, pH7.4 PBS, 0.05% NaN <sub>3</sub> , 40% Glycerol

### Product overview

<b>Description</b>	Anti-NME4 rabbit polyclonal antibody
<b>Applications</b>	ELISA, IHC
<b>Immunogen</b>	Fusion protein of human NME4
<b>Reactivity</b>	Human, Mouse
<b>Content</b>	0.5 mg/ml
<b>Host species</b>	Rabbit
<b>Ig class</b>	Immunogen-specific rabbit IgG
<b>Purification</b>	Antigen affinity purification

### Target information

<b>Symbol</b>	NME4
<b>Full name</b>	NME/NM23 nucleoside diphosphate kinase 4
<b>Synonyms</b>	NDPK-D; NM23H4; nm23-H4
<b>Swissprot</b>	O00746

### Target Background

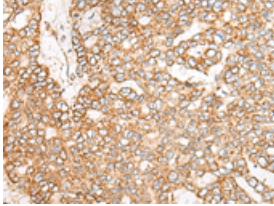
The nucleoside diphosphate (NDP) kinases (EC 2.7.4.6) are ubiquitous enzymes that catalyze transfer of gamma-phosphates, via a phosphohistidine intermediate, between nucleoside and dioxynucleoside tri- and diphosphates. The enzymes are products of the nm23 gene family, which includes NME4 (Milon et al., 1997 [PubMed 9099850]).

订购热线: 4008-898-798

#### Applications

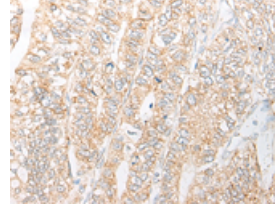
##### Immunohistochemistry

Predicted cell location: Cytoplasm  
Positive control: Human liver cancer  
Recommended dilution: 30-150



The image is immunohistochemistry of paraffin-embedded Human liver cancer tissue using ml221043(NME4 Antibody) at dilution 1/45. (Original magnification: ×200)

Predicted cell location: Cytoplasm  
Positive control: Human gastric cancer  
Recommended dilution: 30-150



The image is immunohistochemistry of paraffin-embedded Human gastric cancer tissue using ml221043(NME4 Antibody) at dilution 1/45. (Original magnification: ×200)

##### ELISA

Recommended dilution: 1000-2000

联系电话: 4008-898-798, 021-61725725

联系QQ: 2881505695, 2881505696

邮箱: [mlbio\\_cn@yeah.net](mailto:mlbio_cn@yeah.net)

网址: [www.mlbio.cn](http://www.mlbio.cn)