

Anti-OMG antibody

Cat. No.	ml221074
Package	25 µl/100 µl/200 µl
Storage	-20°C, pH7.4 PBS, 0.05% NaN ₃ , 40% Glycerol

Product overview

Description	Anti-OMG rabbit polyclonal antibody
Applications	ELISA, IHC
Immunogen	Fusion protein of human OMG
Reactivity	Human, Mouse
Content	0.2 mg/ml
Host species	Rabbit
Ig class	Immunogen-specific rabbit IgG
Purification	Antigen affinity purification

Target information

Symbol	OMG
Full name	oligodendrocyte myelin glycoprotein
Synonyms	OMGP
Swissprot	P23515

Target Background

This gene is cell adhesion molecule contributing to the interactive process required for myelination in the central nervous system. Mostly expression in Oligodendrocytes and myelin tissues.

订购热线: 4008-898-798

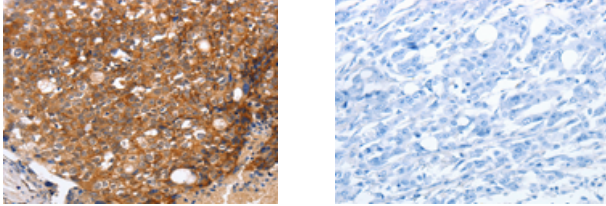
Applications

Immunohistochemistry

Predicted cell location: Cytoplasm, Cell membrane

Positive control: Human breast cancer

Recommended dilution: 25-100



The image on the left is immunohistochemistry of paraffin-embedded Human breast cancer tissue using ml221074(OMG Antibody) at dilution 1/20, on the right is treated with fusion protein. (Original magnification: $\times 200$)

ELISA

Recommended dilution: 1000-5000

联系电话: 4008-898-798, 021-61725725

联系QQ: 2881505695, 2881505696

邮箱: mlbio_cn@yeah.net

网址: www.mlbio.cn