

Anti-PIWIL4 antibody

Cat. No.	ml221135
Package	25 µl/100 µl/200 µl
Storage	-20°C, pH7.4 PBS, 0.05% NaN ₃ , 40% Glycerol

Product overview

Description	Anti-PIWIL4 rabbit polyclonal antibody
Applications	ELISA, IHC
Immunogen	Fusion protein of human PIWIL4
Reactivity	Human, Mouse, Rat
Content	0.2 mg/ml
Host species	Rabbit
Ig class	Immunogen-specific rabbit IgG
Purification	Antigen affinity purification

Target information

Symbol	PIWIL4
Full name	piwi-like RNA-mediated gene silencing 4
Synonyms	HIWI2, MIWI2
Swissprot	Q7Z3Z4

Target Background

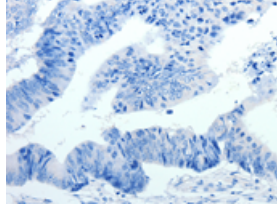
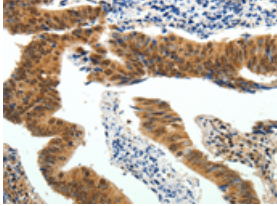
PIWIL4 belongs to the Argonaute family of proteins, which function in development and maintenance of germline stem cells. It plays a central role during spermatogenesis by repressing transposable elements and prevent their mobilization, which is essential for the germline integrity. May be involved in the chromatin-modifying pathway by inducing 'Lys-9' methylation of histone H3 at some loci.

订购热线: 4008-898-798

Applications

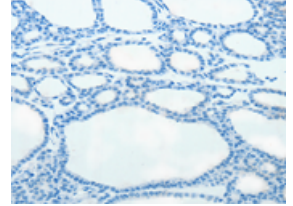
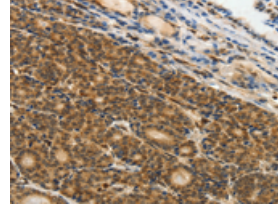
Immunohistochemistry

Predicted cell location: Cytoplasm, Nucleus
Positive control: Human colon cancer
Recommended dilution: 50-200



The image on the left is immunohistochemistry of paraffin-embedded Human colon cancer tissue using ml221135(PIWIL4 Antibody) at dilution 1/25, on the right is treated with fusion protein. (Original magnification: ×200)

Predicted cell location: Cytoplasm, Nucleus
Positive control: Human thyroid cancer
Recommended dilution: 50-200



The image on the left is immunohistochemistry of paraffin-embedded Human thyroid cancer tissue using ml221135(PIWIL4 Antibody) at dilution 1/25, on the right is treated with fusion protein. (Original magnification: ×200)

ELISA

Recommended dilution: 2000-5000

联系电话: 4008-898-798, 021-61725725

联系QQ: 2881505695, 2881505696

邮箱: mlbio_cn@yeah.net

网址: www.mlbio.cn