

Anti-SELE antibody

Cat. No.	ml221179
Package	25 µl/100 µl/200 µl
Storage	-20°C, pH7.4 PBS, 0.05% NaN ₃ , 40% Glycerol

Product overview

Description	Anti-SELE rabbit polyclonal antibody
Applications	ELISA, IHC
Immunogen	Fusion protein of human SELE
Reactivity	Human
Content	0.3 mg/ml
Host species	Rabbit
Ig class	Immunogen-specific rabbit IgG
Purification	Antigen affinity purification

Target information

Symbol	SELE
Full name	selectin E
Synonyms	ELAM; ESEL; CD62E; ELAM1; LECAM2
Swissprot	P16581

Target Background

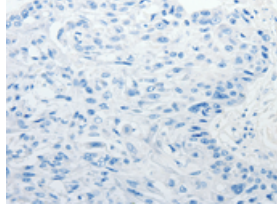
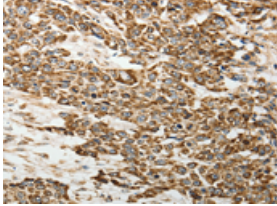
The protein encoded by this gene is found in cytokine-stimulated endothelial cells and is thought to be responsible for the accumulation of blood leukocytes at sites of inflammation by mediating the adhesion of cells to the vascular lining. It exhibits structural features such as the presence of lectin- and EGF-like domains followed by short consensus repeat (SCR) domains that contain 6 conserved cysteine residues. These proteins are part of the selectin family of cell adhesion molecules. Adhesion molecules participate in the interaction between leukocytes and the endothelium and appear to be involved in the pathogenesis of atherosclerosis.

订购热线: 4008-898-798

Applications

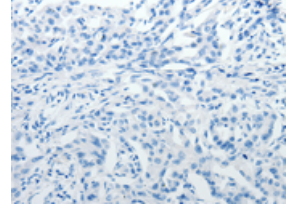
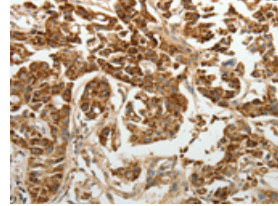
Immunohistochemistry

Predicted cell location: Cell membrane, Cytoplasm
Positive control: Human esophagus cancer
Recommended dilution: 50-200



The image on the left is immunohistochemistry of paraffin-embedded Human esophagus cancer tissue using ml221179(SELE Antibody) at dilution 1/30, on the right is treated with fusion protein. (Original magnification: ×200)

Predicted cell location: Cell membrane, Cytoplasm
Positive control: Human lung cancer
Recommended dilution: 50-200



The image on the left is immunohistochemistry of paraffin-embedded Human lung cancer tissue using ml221179(SELE Antibody) at dilution 1/30, on the right is treated with fusion protein. (Original magnification: ×200)

ELISA

Recommended dilution: 2000-5000

联系电话: 4008-898-798, 021-61725725

联系QQ: 2881505695, 2881505696

邮箱: mlbio_cn@yeah.net

网址: www.mlbio.cn