

Anti-SEMA3G antibody

Cat. No.	ml221212
Package	25 µl/100 µl/200 µl
Storage	-20°C, pH7.4 PBS, 0.05% NaN ₃ , 40% Glycerol

Product overview

Description	Anti-SEMA3G rabbit polyclonal antibody
Applications	ELISA, IHC
Immunogen	Fusion protein of human SEMA3G
Reactivity	Human
Content	0.3 mg/ml
Host species	Rabbit
Ig class	Immunogen-specific rabbit IgG
Purification	Antigen affinity purification

Target information

Symbol	SEMA3G
Full name	sema domain, immunoglobulin domain (Ig), short basic domain, secreted, (semaphorin) 3G
Synonyms	sem2
Swissprot	Q9NS98

Target Background

Semaphorins are a class of secreted and membrane proteins that act as axonal growth cone guidance molecules. They primarily act as short-range inhibitory signals and signal through multimeric receptor complexes. They are usually cues to deflect axons from inappropriate regions, especially important in neural system development. The major class of proteins that act as their receptors are called plexins. SEMA3G possesses anti-migration and anti-invasion ability. SEMA3G inhibited tumor cell migration and invasion, which may be obtained through cell autonomous or paracrine mechanisms, and SEMA3G is a potential target for antitumor migration and invasion.

订购热线: 4008-898-798

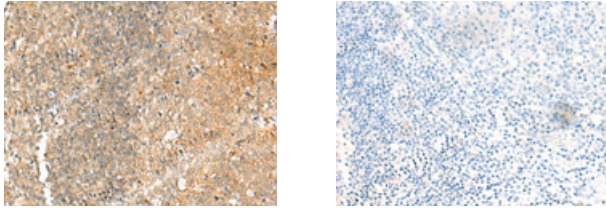
Applications

Immunohistochemistry

Predicted cell location: Cytoplasm

Positive control: Human colon cancer

Recommended dilution: 25-100



The image on the left is immunohistochemistry of paraffin-embedded Human colon cancer tissue using ml221212(SEMA3G Antibody) at dilution 1/30, on the right is treated with fusion protein. (Original magnification: $\times 200$)

ELISA

Recommended dilution: 1000-5000

联系电话: 4008-898-798, 021-61725725

联系QQ: 2881505695, 2881505696

邮箱: mlbio_cn@yeah.net

网址: www.mlbio.cn