

## Anti-SLC4A4 antibody

<b>Cat. No.</b>	ml221226
<b>Package</b>	25 µl/100 µl/200 µl
<b>Storage</b>	-20°C, pH7.4 PBS, 0.05% NaN <sub>3</sub> , 40% Glycerol

### Product overview

<b>Description</b>	Anti-SLC4A4 rabbit polyclonal antibody
<b>Applications</b>	ELISA, IHC
<b>Immunogen</b>	Fusion protein of human SLC4A4
<b>Reactivity</b>	Human, Mouse, Rat
<b>Content</b>	0.4 mg/ml
<b>Host species</b>	Rabbit
<b>Ig class</b>	Immunogen-specific rabbit IgG
<b>Purification</b>	Antigen affinity purification

### Target information

<b>Symbol</b>	SLC4A4
<b>Full name</b>	solute carrier family 4, sodium bicarbonate cotransporter, member 4
<b>Synonyms</b>	KNBC; NBC1; NBC2; pNBC; HNBC1; hhNMC; SLC4A5; NBCe1-A
<b>Swissprot</b>	Q9Y6R1

### Target Background

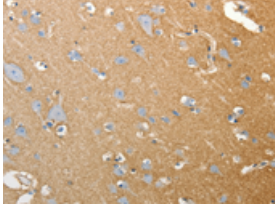
This gene encodes a sodium bicarbonate cotransporter (NBC) involved in the regulation of bicarbonate secretion and absorption and intracellular pH. Mutations in this gene are associated with proximal renal tubular acidosis. Multiple transcript variants encoding different isoforms have been found for this gene. Sodium bicarbonate cotransporters (NBCs) mediate the coupled movement of sodium and bicarbonate ions across the plasma membrane of many cells. This is an electrogenic process with an apparent stoichiometry of 3 bicarbonate ions per sodium ion. Sodium bicarbonate cotransport is involved in bicarbonate secretion/absorption and intracellular pH regulation. Romero and Boron (1999) reviewed NBCs. Soleimani and Burnham (2000) reviewed NBCs and their regulation in physiologic and pathophysiologic states.

订购热线: 4008-898-798

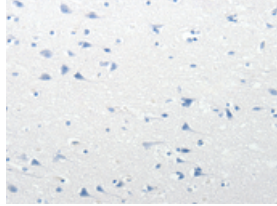
### Applications

#### Immunohistochemistry

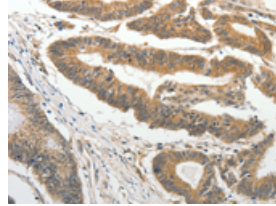
Predicted cell location: Cytoplasm  
Positive control: Human brain  
Recommended dilution: 50-200



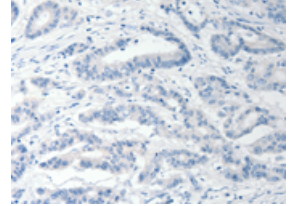
The image on the left is immunohistochemistry of paraffin-embedded Human brain tissue using ml221226(SLC4A4 Antibody) at dilution 1/50, on the right is treated with fusion protein. (Original magnification: ×200)



Predicted cell location: Cytoplasm  
Positive control: Human colon cancer  
Recommended dilution: 50-200



The image on the left is immunohistochemistry of paraffin-embedded Human colon cancer tissue using ml221226(SLC4A4 Antibody) at dilution 1/50, on the right is treated with fusion protein. (Original magnification: ×200)



#### ELISA

Recommended dilution: 2000-5000

联系电话: 4008-898-798, 021-61725725

联系QQ: 2881505695, 2881505696

邮箱: [mlbio\\_cn@yeah.net](mailto:mlbio_cn@yeah.net)

网址: [www.mlbio.cn](http://www.mlbio.cn)