

Anti-SLC19A2 antibody

Cat. No.	ml221229
Package	25 µl/100 µl/200 µl
Storage	-20°C, pH7.4 PBS, 0.05% NaN ₃ , 40% Glycerol

Product overview

Description	Anti-SLC19A2 rabbit polyclonal antibody
Applications	ELISA, IHC
Immunogen	Fusion protein of human SLC19A2
Reactivity	Human
Content	0.1 mg/ml
Host species	Rabbit
Ig class	Immunogen-specific rabbit IgG
Purification	Antigen affinity purification

Target information

Symbol	SLC19A2
Full name	solute carrier family 19 (thiamine transporter), member 2
Synonyms	TC1; THT1; TRMA; THMD1; THTR1
Swissprot	O60779

Target Background

This gene encodes the thiamin transporter protein. Mutations in this gene cause thiamin-responsive megaloblastic anemia syndrome (TRMA), which is an autosomal recessive disorder characterized by diabetes mellitus, megaloblastic anemia and sensorineural deafness.

订购热线: 4008-898-798

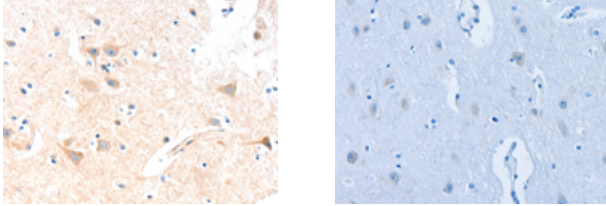
Applications

Immunohistochemistry

Predicted cell location: Cytoplasm

Positive control: Human brain

Recommended dilution: 15-50



The image on the left is immunohistochemistry of paraffin-embedded Human brain tissue using ml221229(SLC19A2 Antibody) at dilution 1/15, on the right is treated with fusion protein. (Original magnification: $\times 200$)

ELISA

Recommended dilution: 1000-2000

联系电话: 4008-898-798, 021-61725725

联系QQ: 2881505695, 2881505696

邮箱: mlbio_cn@yeah.net

网址: www.mlbio.cn