

Anti-NR2C2AP antibody

Cat. No.	ml221353
Package	25 µl/100 µl/200 µl
Storage	-20°C, pH7.4 PBS, 0.05% NaN ₃ , 40% Glycerol

Product overview

Description	Anti-NR2C2AP rabbit polyclonal antibody
Applications	ELISA, IHC
Immunogen	Full length fusion protein
Reactivity	Human, Mouse
Content	0.2 mg/ml
Host species	Rabbit
Ig class	Immunogen-specific rabbit IgG
Purification	Antigen affinity purification

Target information

Symbol	NR2C2AP
Full name	nuclear receptor 2C2 associated protein
Synonyms	TRA16
Swissprot	Q86WQ0

Target Background

May act as a repressor of NR2C2-mediated transactivation by suppressing the binding between NR2C2/TR4 and the TR4-response element in target genes.

订购热线: 4008-898-798

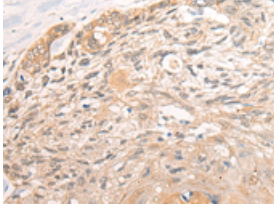
Applications

Immunohistochemistry

Predicted cell location: Nucleus

Positive control: Human esophagus cancer

Recommended dilution: 25-100



The image is immunohistochemistry of paraffin-embedded Human esophagus cancer tissue using ml221353(NR2C2AP Antibody) at dilution 1/25. (Original magnification: ×200)

ELISA

Recommended dilution: 5000-10000

联系电话: 4008-898-798, 021-61725725

联系QQ: 2881505695, 2881505696

邮箱: mlbio_cn@yeah.net

网址: www.mlbio.cn