

## Anti-TRAF4 antibody

<b>Cat. No.</b>	ml221360
<b>Package</b>	25 µl/100 µl/200 µl
<b>Storage</b>	-20°C, pH7.4 PBS, 0.05% NaN <sub>3</sub> , 40% Glycerol

### Product overview

<b>Description</b>	Anti-TRAF4 rabbit polyclonal antibody
<b>Applications</b>	ELISA, IHC
<b>Immunogen</b>	Fusion protein of human TRAF4
<b>Reactivity</b>	Human, Mouse
<b>Content</b>	0.2 mg/ml
<b>Host species</b>	Rabbit
<b>Ig class</b>	Immunogen-specific rabbit IgG
<b>Purification</b>	Antigen affinity purification

### Target information

<b>Symbol</b>	TRAF4
<b>Full name</b>	TNF receptor associated factor 4
<b>Synonyms</b>	CART1; MLN62; RNF83
<b>Swissprot</b>	Q9BUZ4

### Target Background

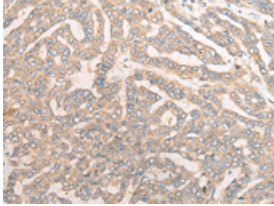
This gene encodes a member of the TNF receptor associated factor (TRAF) family. TRAF proteins are associated with, and mediate signal transduction from members of the TNF receptor superfamily. The encoded protein has been shown to interact with neurotrophin receptor, p75 (NTR/NTSR1), and negatively regulate NTR induced cell death and NF-kappa B activation. This protein has been found to bind to p47phox, a cytosolic regulatory factor included in a multi-protein complex known as NAD(P)H oxidase. This protein thus, is thought to be involved in the oxidative activation of MAPK8/JNK. Alternatively spliced transcript variants have been observed but the full-length nature of only one has been determined.

订购热线: 4008-898-798

#### Applications

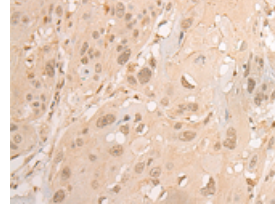
##### Immunohistochemistry

Predicted cell location: Cytoplasm or Nucleus  
Positive control: Human liver cancer  
Recommended dilution: 25-100



The image is immunohistochemistry of paraffin-embedded Human liver cancer tissue using ml221360(TRAF4 Antibody) at dilution 1/25. (Original magnification: ×200)

Predicted cell location: Cytoplasm or Nucleus  
Positive control: Human esophagus cancer  
Recommended dilution: 25-100



The image is immunohistochemistry of paraffin-embedded Human esophagus cancer tissue using ml221360(TRAF4 Antibody) at dilution 1/25. (Original magnification: ×200)

##### ELISA

Recommended dilution: 5000-10000

联系电话: 4008-898-798, 021-61725725

联系QQ: 2881505695, 2881505696

邮箱: [mlbio\\_cn@yeah.net](mailto:mlbio_cn@yeah.net)

网址: [www.mlbio.cn](http://www.mlbio.cn)