

Anti-DCT antibody

| | |
|-----------------|---|
| Cat. No. | ml221374 |
| Package | 25 µl/100 µl/200 µl |
| Storage | -20°C, pH7.4 PBS, 0.05% NaN ₃ , 40% Glycerol |

Product overview

| | |
|---------------------|-------------------------------------|
| Description | Anti-DCT rabbit polyclonal antibody |
| Applications | ELISA, IHC |
| Immunogen | Fusion protein of human DCT |
| Reactivity | Human, Mouse |
| Content | 0.2 mg/ml |
| Host species | Rabbit |
| Ig class | Immunogen-specific rabbit IgG |
| Purification | Antigen affinity purification |

Target information

| | |
|------------------|------------------------|
| Symbol | DCT |
| Full name | dopachrome tautomerase |
| Synonyms | TRP-2; TYRP2 |
| Swissprot | P40126 |

Target Background

This protein can involved in regulating eumelanin and phaeomelanin levels. The subcellular location of this protein is melanosome membrane, Single-pass type I membrane protein. It may form a multienzyme complex together with Tyrosinase and TYRP1.

订购热线: 4008-898-798

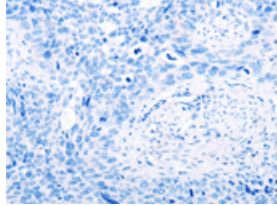
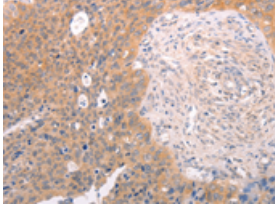
Applications

Immunohistochemistry

Predicted cell location: Cytoplasm

Positive control: Human cervical cancer

Recommended dilution: 25-100

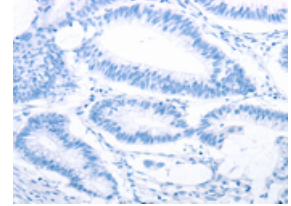
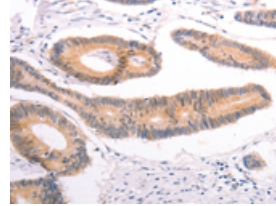


The image on the left is immunohistochemistry of paraffin-embedded Human cervical cancer tissue using ml221374(DCT Antibody) at dilution 1/25, on the right is treated with fusion protein. (Original magnification: $\times 200$)

Predicted cell location: Cytoplasm

Positive control: Human colon cancer

Recommended dilution: 25-100



The image on the left is immunohistochemistry of paraffin-embedded Human colon cancer tissue using ml221374(DCT Antibody) at dilution 1/25, on the right is treated with fusion protein. (Original magnification: $\times 200$)

ELISA

Recommended dilution: 2000-5000

联系电话: 4008-898-798, 021-61725725

联系QQ: 2881505695, 2881505696

邮箱: mlbio_cn@yeah.net

网址: www.mlbio.cn