

Anti-SPATA19 antibody

Cat. No.	ml221385
Package	25 µl/100 µl/200 µl
Storage	-20°C, pH7.4 PBS, 0.05% NaN ₃ , 40% Glycerol

Product overview

Description	Anti-SPATA19 rabbit polyclonal antibody
Applications	ELISA, IHC
Immunogen	Fusion protein of human SPATA19
Reactivity	Human
Content	0.2 mg/ml
Host species	Rabbit
Ig class	Immunogen-specific rabbit IgG
Purification	Antigen affinity purification

Target information

Symbol	SPATA19
Full name	spermatogenesis associated 19
Synonyms	CT132; SPAS1; spergen1
Swissprot	Q7Z5L4

Target Background

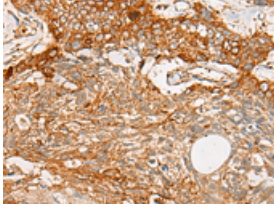
SPATA19(spermatogenesis associated 19), also known as spergen1 (spermatogenic cell-specific gene 1 protein), CT132 or SPAS1, is a 167 amino acid mitochondrial outer membrane protein suggested to function in spermiogenesis. Expressed specifically in testis, SPATA19 is encoded by a gene that maps to human chromosome 11, which comprises approximately 4% of human genomic DNA and is considered a gene and disease association dense chromosome. The chromosome 11 encoded Atm gene is important for regulation of cell cycle arrest and apoptosis following double strand DNA breaks. Atm mutation leads to the disorder known as ataxiatelangiectasia. The blood disorders Sickle cell anemia and thalassemia are caused by HBB gene mutations, while Wilms' tumors, WAGR syndrome and Denys-Drash syndrome are associated with mutations of the WT1 gene. Jervell and Lange-Nielsen syndrome, Jacobsen syndrome, Niemann-Pick disease, hereditary angioedema and Smith-Lemli-Opitz syndrome are also associated with defects in chromosome 11-encoded genes.

订购热线: 4008-898-798

Applications

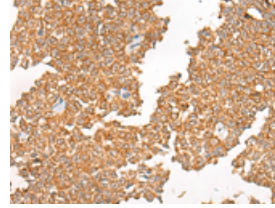
Immunohistochemistry

Predicted cell location: Mitochondrion outer membrane
Positive control: Human esophagus cancer
Recommended dilution: 25-100



The image is immunohistochemistry of paraffin-embedded Human esophagus cancer tissue using ml221385(SPATA19 Antibody) at dilution 1/20. (Original magnification: ×200)

Predicted cell location: Mitochondrion outer membrane
Positive control: Human ovarian cancer
Recommended dilution: 25-100



The image is immunohistochemistry of paraffin-embedded Human ovarian cancer tissue using ml221385(SPATA19 Antibody) at dilution 1/20. (Original magnification: ×200)

ELISA

Recommended dilution: 5000-10000

联系电话: 4008-898-798, 021-61725725

联系QQ: 2881505695, 2881505696

邮箱: mlbio_cn@yeah.net

网址: www.mlbio.cn