

Anti-HEXIM1 antibody

Cat. No.	ml221394
Package	25 µl/100 µl/200 µl
Storage	-20°C, pH7.4 PBS, 0.05% NaN ₃ , 40% Glycerol

Product overview

Description	Anti-HEXIM1 rabbit polyclonal antibody
Applications	ELISA, IHC
Immunogen	Fusion protein of human HEXIM1
Reactivity	Human, Mouse, Rat
Content	0.5 mg/ml
Host species	Rabbit
Ig class	Immunogen-specific rabbit IgG
Purification	Antigen affinity purification

Target information

Symbol	HEXIM1
Full name	hexamethylene bis-acetamide inducible 1
Synonyms	CLP1; EDG1; HIS1; MAQ1
Swissprot	O94992

Target Background

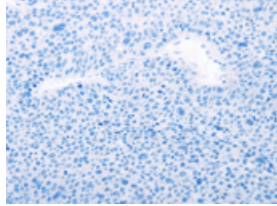
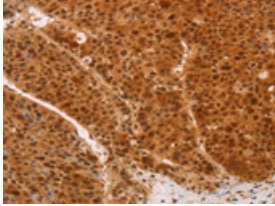
Expression of this gene is induced by hexamethylene-bis-acetamide in vascular smooth muscle cells. This gene has no introns.

订购热线: 4008-898-798

Applications

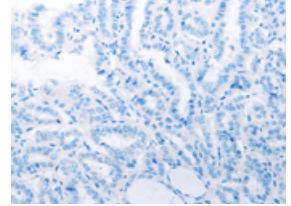
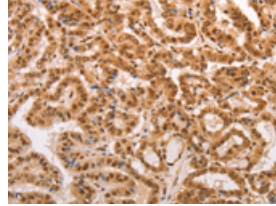
Immunohistochemistry

Predicted cell location: Cytoplasm, Nucleus
Positive control: Human liver cancer
Recommended dilution: 100-300



The image on the left is immunohistochemistry of paraffin-embedded Human liver cancer tissue using ml221394(HEXIM1 Antibody) at dilution 1/65, on the right is treated with fusion protein. (Original magnification: ×200)

Predicted cell location: Cytoplasm, Nucleus
Positive control: Human thyroid cancer
Recommended dilution: 100-300



The image on the left is immunohistochemistry of paraffin-embedded Human thyroid cancer tissue using ml221394(HEXIM1 Antibody) at dilution 1/65, on the right is treated with fusion protein. (Original magnification: ×200)

ELISA

Recommended dilution: 3000-10000

联系电话: 4008-898-798, 021-61725725

联系QQ: 2881505695, 2881505696

邮箱: mlbio_cn@yeah.net

网址: www.mlbio.cn