

## Anti-AOC1 antibody

|                 |   |
|-----------------|---|
| <b>Cat. No.</b> | ml221455  |
| <b>Package</b>  | 25 µl/100 µl/200 µl                                     |
| <b>Storage</b>  | -20°C, pH7.4 PBS, 0.05% NaN <sub>3</sub> , 40% Glycerol |

### Product overview

|                     |                                      |
|---------------------|--------------------------------------|
| <b>Description</b>  | Anti-AOC1 rabbit polyclonal antibody |
| <b>Applications</b> | ELISA, IHC                           |
| <b>Immunogen</b>    | Fusion protein of human AOC1         |
| <b>Reactivity</b>   | Human, Mouse, Rat                    |
| <b>Content</b>      | 0.2 mg/ml                            |
| <b>Host species</b> | Rabbit                               |
| <b>Ig class</b>     | Immunogen-specific rabbit IgG        |
| <b>Purification</b> | Antigen affinity purification        |

### Target information

|                  |                                    |
|------------------|------------------------------------|
| <b>Symbol</b>    | AOC1                               |
| <b>Full name</b> | amine oxidase, copper containing 1 |
| <b>Synonyms</b>  | ABP; DAO; KAO; ABP1; DAO1          |
| <b>Swissprot</b> | P19801                             |

### Target Background

This gene encodes a metal-binding membrane glycoprotein that oxidatively deaminates putrescine, histamine, and related compounds. The encoded protein is inhibited by amiloride, a diuretic that acts by closing epithelial sodium ion channels. Alternatively spliced transcript variants encoding multiple isoforms have been observed for this gene.

订购热线: 4008-898-798

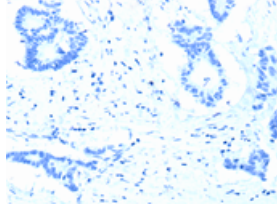
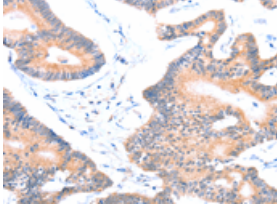
### Applications

#### Immunohistochemistry

Predicted cell location: Cytoplasm

Positive control: Human colon cancer

Recommended dilution: 15-50

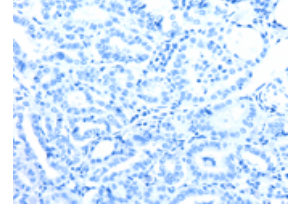
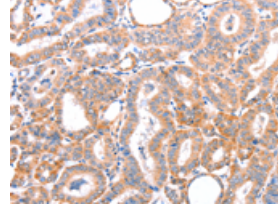


The image on the left is immunohistochemistry of paraffin-embedded Human colon cancer tissue using ml221455(AOC1 Antibody) at dilution 1/15, on the right is treated with fusion protein. (Original magnification: ×200)

Predicted cell location: Cytoplasm

Positive control: Human thyroid cancer

Recommended dilution: 15-50



The image on the left is immunohistochemistry of paraffin-embedded Human thyroid cancer tissue using ml221455(AOC1 Antibody) at dilution 1/15, on the right is treated with fusion protein. (Original magnification: ×200)

#### ELISA

Recommended dilution: 1000-2000

联系电话: 4008-898-798, 021-61725725

联系QQ: 2881505695, 2881505696

邮箱: [mlbio\\_cn@yeah.net](mailto:mlbio_cn@yeah.net)

网址: [www.mlbio.cn](http://www.mlbio.cn)