

Anti-ACSBG1 antibody

Cat. No.	ml221474
Package	25 µl/100 µl/200 µl
Storage	-20°C, pH7.4 PBS, 0.05% NaN ₃ , 40% Glycerol

Product overview

Description	Anti-ACSBG1 rabbit polyclonal antibody
Applications	ELISA, IHC
Immunogen	Fusion protein of human ACSBG1
Reactivity	Human, Mouse, Rat
Content	0.4 mg/ml
Host species	Rabbit
Ig class	Immunogen-specific rabbit IgG
Purification	Antigen affinity purification

Target information

Symbol	ACSBG1
Full name	acyl-CoA synthetase bubblegum family member 1
Synonyms	BG; BG1; BGM; LPD; GR-LACS
Swissprot	Q96GR2

Target Background

The protein encoded by this gene possesses long-chain acyl-CoA synthetase activity. It is thought to play a central role in brain very long-chain fatty acids metabolism and myelinogenesis.

订购热线: 4008-898-798

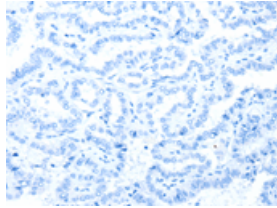
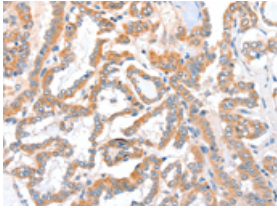
Applications

Immunohistochemistry

Predicted cell location: Cytoplasm

Positive control: Human thyroid cancer

Recommended dilution: 50-100

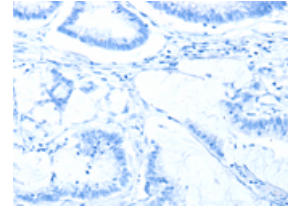
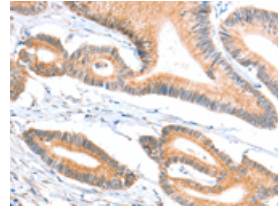


The image on the left is immunohistochemistry of paraffin-embedded Human thyroid cancer tissue using ml221474(ACSBG1 Antibody) at dilution 1/40, on the right is treated with fusion protein. (Original magnification: $\times 200$)

Predicted cell location: Cytoplasm

Positive control: Human colon cancer

Recommended dilution: 50-100



The image on the left is immunohistochemistry of paraffin-embedded Human colon cancer tissue using ml221474(ACSBG1 Antibody) at dilution 1/40, on the right is treated with fusion protein. (Original magnification: $\times 200$)

ELISA

Recommended dilution: 2000-5000

联系电话: 4008-898-798, 021-61725725

联系QQ: 2881505695, 2881505696

邮箱: mlbio_cn@yeah.net

网址: www.mlbio.cn