

Anti-ADAM7 antibody

Cat. No.	ml221503
Package	25 µl/100 µl/200 µl
Storage	-20°C, pH7.4 PBS, 0.05% NaN ₃ , 40% Glycerol

Product overview

Description	Anti-ADAM7 rabbit polyclonal antibody
Applications	ELISA, IHC
Immunogen	Fusion protein of human ADAM7
Reactivity	Human
Content	0.2 mg/ml
Host species	Rabbit
Ig class	Immunogen-specific rabbit IgG
Purification	Antigen affinity purification

Target information

Symbol	ADAM7
Full name	ADAM metalloproteinase domain 7
Synonyms	EAPI; GP83; GP-83; ADAM 7; ADAM-7
Swissprot	Q9H2U9

Target Background

This gene encodes a member of the ADAMs family of zinc proteases. These transmembrane proteins play roles in multiple processes including cell signaling, adhesion and migration. The encoded protein lacks protease activity and may play roles in protein-protein interactions and cell adhesion processes including sperm-egg fusion. Mutations in this gene may be involved in the progression of melanoma.

订购热线: 4008-898-798

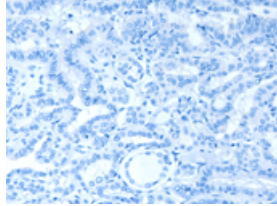
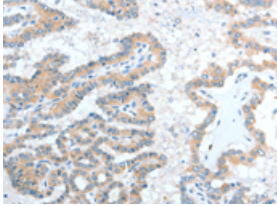
Applications

Immunohistochemistry

Predicted cell location: Cytoplasm

Positive control: Human thyroid cancer

Recommended dilution: 25-100

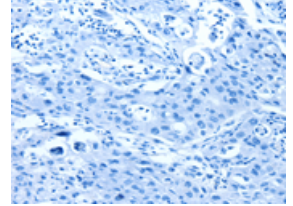
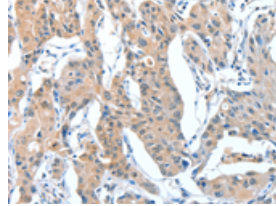


The image on the left is immunohistochemistry of paraffin-embedded Human thyroid cancer tissue using ml221503(ADAM7 Antibody) at dilution 1/20, on the right is treated with fusion protein. (Original magnification: $\times 200$)

Predicted cell location: Cytoplasm

Positive control: Human lung cancer

Recommended dilution: 25-100



The image on the left is immunohistochemistry of paraffin-embedded Human lung cancer tissue using ml221503(ADAM7 Antibody) at dilution 1/20, on the right is treated with fusion protein. (Original magnification: $\times 200$)

ELISA

Recommended dilution: 2000-5000

联系电话: 4008-898-798, 021-61725725

联系QQ: 2881505695, 2881505696

邮箱: mlbio_cn@yeah.net

网址: www.mlbio.cn