

Anti-ANGPTL7 antibody

Cat. No.	ml221623
Package	25 µl/100 µl/200 µl
Storage	-20°C, pH7.4 PBS, 0.05% NaN ₃ , 40% Glycerol

Product overview

Description	Anti-ANGPTL7 rabbit polyclonal antibody
Applications	ELISA, IHC
Immunogen	Fusion protein of human ANGPTL7
Reactivity	Human, Mouse
Content	0.4 mg/ml
Host species	Rabbit
Ig class	Immunogen-specific rabbit IgG
Purification	Antigen affinity purification

Target information

Symbol	ANGPTL7
Full name	angiopoietin-like 7
Synonyms	AngX; CDT6; dJ647M16.1; RP4-647M16.2
Swissprot	O43827

Target Background

Angiopoietin-related protein 7 is a protein that in humans is encoded by the ANGPTL7 gene, a member of the ANGPTL family. Highly and specifically expressed in the cornea where is confined to the stromal layer.

订购热线: 4008-898-798

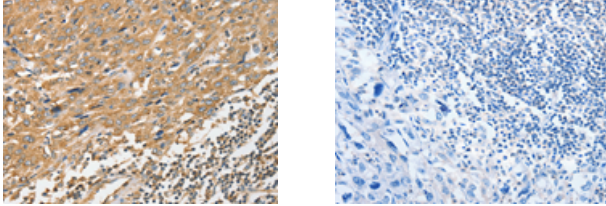
Applications

Immunohistochemistry

Predicted cell location: Cytoplasm

Positive control: Human esophagus cancer

Recommended dilution: 50-200



The image on the left is immunohistochemistry of paraffin-embedded Human esophagus cancer tissue using ml221623(ANGPTL7 Antibody) at dilution 1/40, on the right is treated with fusion protein. (Original magnification: ×200)

ELISA

Recommended dilution: 1000-5000

联系电话: 4008-898-798, 021-61725725

联系QQ: 2881505695, 2881505696

邮箱: mlbio_cn@yeah.net

网址: www.mlbio.cn