

Anti-ARL8A antibody

Cat. No.	ml221699
Package	25 µl/100 µl/200 µl
Storage	-20°C, pH7.4 PBS, 0.05% NaN ₃ , 40% Glycerol

Product overview

Description	Anti-ARL8A rabbit polyclonal antibody
Applications	ELISA, IHC
Immunogen	Fusion protein of human ARL8A
Reactivity	Human, Mouse
Content	0.2 mg/ml
Host species	Rabbit
Ig class	Immunogen-specific rabbit IgG
Purification	Antigen affinity purification

Target information

Symbol	ARL8A
Full name	ADP-ribosylation factor-like 8A
Synonyms	GIE2; ARL10B
Swissprot	Q96BM9

Target Background

ARL8A (ADP-ribosylation factor-like protein 8A), also known as ARL10B or GIE2, is a 186 amino acid protein that localizes to the membrane of late endosomes. Expressed ubiquitously, ARL8A is thought to play a role in lysosomal motility and may also be involved in chromosomal segregation events. The gene encoding ARL8A maps to human chromosome 1, which spans 260 million base pairs, houses over 3,000 genes and comprises nearly 8% of the human genome.

订购热线: 4008-898-798

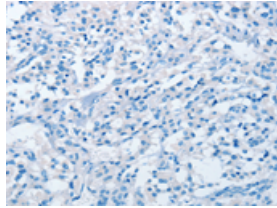
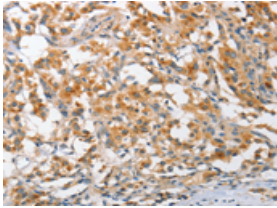
Applications

Immunohistochemistry

Predicted cell location: Cytoplasm

Positive control: Human thyroid cancer

Recommended dilution: 25-100

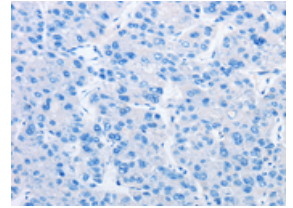
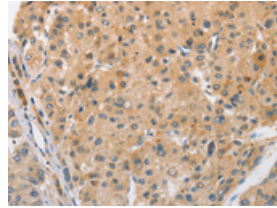


The image on the left is immunohistochemistry of paraffin-embedded Human thyroid cancer tissue using ml221699(ARL8A Antibody) at dilution 1/25, on the right is treated with fusion protein. (Original magnification: ×200)

Predicted cell location: Cytoplasm

Positive control: Human liver cancer

Recommended dilution: 25-100



The image on the left is immunohistochemistry of paraffin-embedded Human liver cancer tissue using ml221699(ARL8A Antibody) at dilution 1/25, on the right is treated with fusion protein. (Original magnification: ×200)

ELISA

Recommended dilution: 2000-5000

联系电话: 4008-898-798, 021-61725725

联系QQ: 2881505695, 2881505696

邮箱: mlbio_cn@yeah.net

网址: www.mlbio.cn