

Anti-ART5 antibody

| | |
|-----------------|---|
| Cat. No. | ml221730 |
| Package | 25 µl/100 µl/200 µl |
| Storage | -20°C, pH7.4 PBS, 0.05% NaN ₃ , 40% Glycerol |

Product overview

| | |
|---------------------|--------------------------------------|
| Description | Anti-ART5 rabbit polyclonal antibody |
| Applications | ELISA, IHC |
| Immunogen | Fusion protein of human ART5 |
| Reactivity | Human, Mouse |
| Content | 0.3 mg/ml |
| Host species | Rabbit |
| Ig class | Immunogen-specific rabbit IgG |
| Purification | Antigen affinity purification |

Target information

| | |
|------------------|--------------------------|
| Symbol | ART5 |
| Full name | ADP-ribosyltransferase 5 |
| Synonyms | ARTC5 |
| Swissprot | Q96L15 |

Target Background

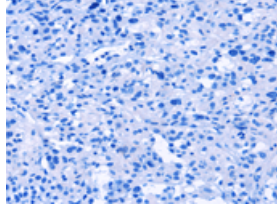
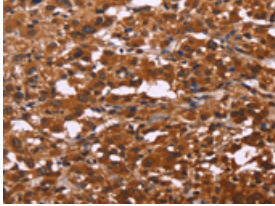
The protein encoded by this gene belongs to the ARG-specific ADP-ribosyltransferase family. Proteins in this family regulate the function of target proteins by attaching ADP-ribose to specific amino acid residues in their target proteins. The mouse homolog lacks a glycosylphosphatidylinositol-anchor signal sequence and is predicted to be a secretory enzyme. Transcript variants with different 5' UTRs, but encoding the same protein have been found for this gene.

订购热线: 4008-898-798

Applications

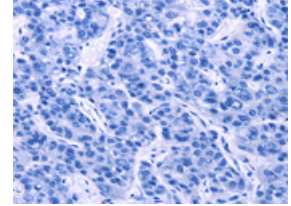
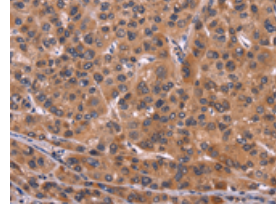
Immunohistochemistry

Predicted cell location: Cytoplasm and Nucleus
Positive control: Human thyroid cancer
Recommended dilution: 100-300



The image on the left is immunohistochemistry of paraffin-embedded Human thyroid cancer tissue using ml221730(ART5 Antibody) at dilution 1/50, on the right is treated with fusion protein. (Original magnification: ×200)

Predicted cell location: Cytoplasm and Nucleus
Positive control: Human liver cancer
Recommended dilution: 100-300



The image on the left is immunohistochemistry of paraffin-embedded Human liver cancer tissue using ml221730(ART5 Antibody) at dilution 1/50, on the right is treated with fusion protein. (Original magnification: ×200)

ELISA

Recommended dilution: 2000-10000

联系电话: 4008-898-798, 021-61725725

联系QQ: 2881505695, 2881505696

邮箱: mlbio_cn@yeah.net

网址: www.mlbio.cn