

Anti-PIP5K1B antibody

Cat. No.	ml221896
Package	25 µl/100 µl/200 µl
Storage	-20°C, pH7.4 PBS, 0.05% NaN ₃ , 40% Glycerol

Product overview

Description	Anti-PIP5K1B rabbit polyclonal antibody
Applications	ELISA, IHC
Immunogen	Fusion protein of human PIP5K1B
Reactivity	Human, Mouse, Rat
Content	0.4 mg/ml
Host species	Rabbit
Ig class	Immunogen-specific rabbit IgG
Purification	Antigen affinity purification

Target information

Symbol	PIP5K1B
Full name	phosphatidylinositol-4-phosphate 5-kinase, type I, beta
Synonyms	MSS4; STM7
Swissprot	O14986

Target Background

Phosphatidylinositol-4-phosphate-5-kinase (PIP5K) synthesizes phosphatidylinositol-4,5-bisphosphate, which regulates various processes including cell proliferation, survival, membrane trafficking, and cytoskeletal organization. The PIP5K family is divided into type I, type II and type III. Each type of the PIP5K family phosphorylate distinct substrates and they contain an activation loop, which determines their enzymatic specificity and subcellular targeting. The phosphatidylinositol-4-phosphate-5-kinase type I consists of three members, PIP5K I α , I β , and I γ , which are characterized by phosphorylating PI4P on the 5-hydroxyl. PIP5K I α (designated PIP5K I β in mouse) is expressed in brain tissue. PIP5K I β , designated PIP5K I α in mouse, is also called STM7. PIP5K I γ has two variants produced by alternative splicing which are expressed in lung, brain, and kidneys.

订购热线: 4008-898-798

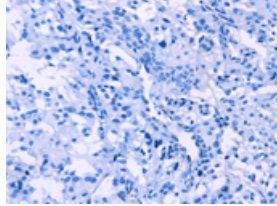
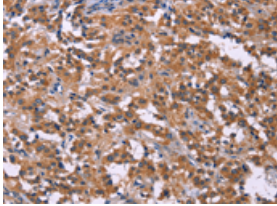
Applications

Immunohistochemistry

Predicted cell location: Cytoplasm

Positive control: Human thyroid cancer

Recommended dilution: 50-200

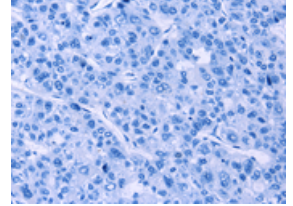
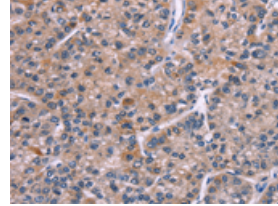


The image on the left is immunohistochemistry of paraffin-embedded Human thyroid cancer tissue using ml221896(PIP5K1B Antibody) at dilution 1/30, on the right is treated with fusion protein. (Original magnification: ×200)

Predicted cell location: Cytoplasm

Positive control: Human liver cancer

Recommended dilution: 50-200



The image on the left is immunohistochemistry of paraffin-embedded Human liver cancer tissue using ml221896(PIP5K1B Antibody) at dilution 1/30, on the right is treated with fusion protein. (Original magnification: ×200)

ELISA

Recommended dilution: 2000-5000

联系电话: 4008-898-798, 021-61725725

联系QQ: 2881505695, 2881505696

邮箱: mlbio_cn@yeah.net

网址: www.mlbio.cn